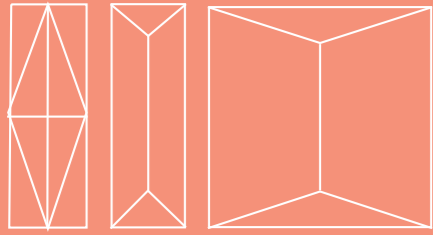




theia

CREATIVE TILES

index



MILANO
PAG 7



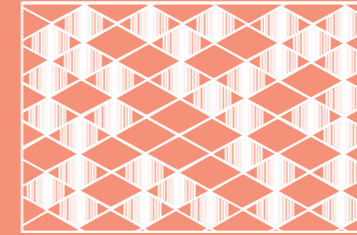
MAR DI FLORES
PAG 13



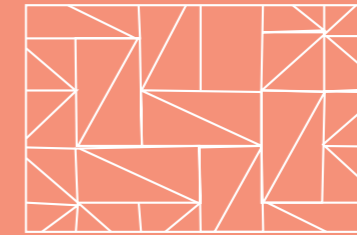
MAR DI GIAVA
PAG 17



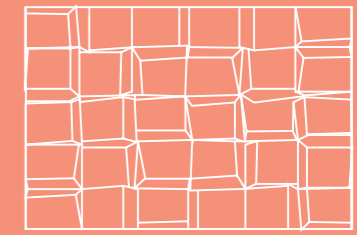
MAR DI BANDA
PAG 21



TUA
PAG 77



TEJO
PAG 78



DOURO
PAG 79



MAR DI KARA
PAG 25



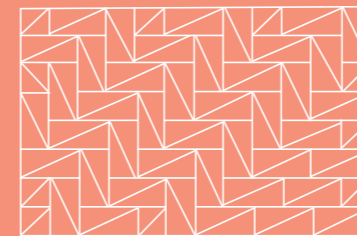
OBLIQUE
PAG 29



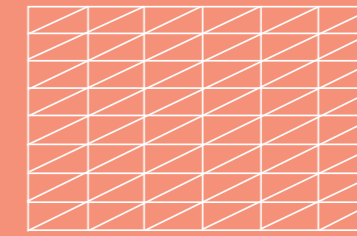
PRISMA
PAG 33



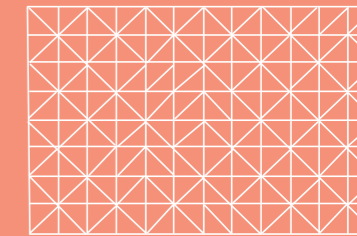
MONDEGO
PAG 37



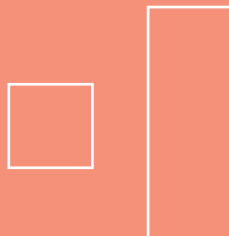
TEJO BLACK & WHITE 1
PAG 80



TEJO BLACK & WHITE 2
PAG 81



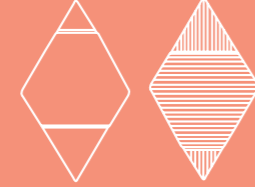
TEJO BLACK & WHITE 3
PAG 82



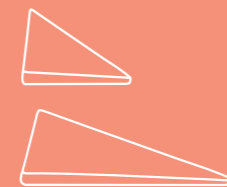
SARAH
PAG 41



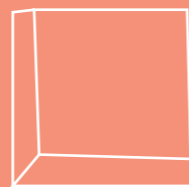
PATTERN
PAG 45



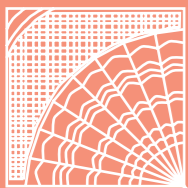
TUA
PAG 49



TEJO
PAG 55



DOURO
PAG 59



GAUDÍ
PAG 63



STRIPES
PAG 67



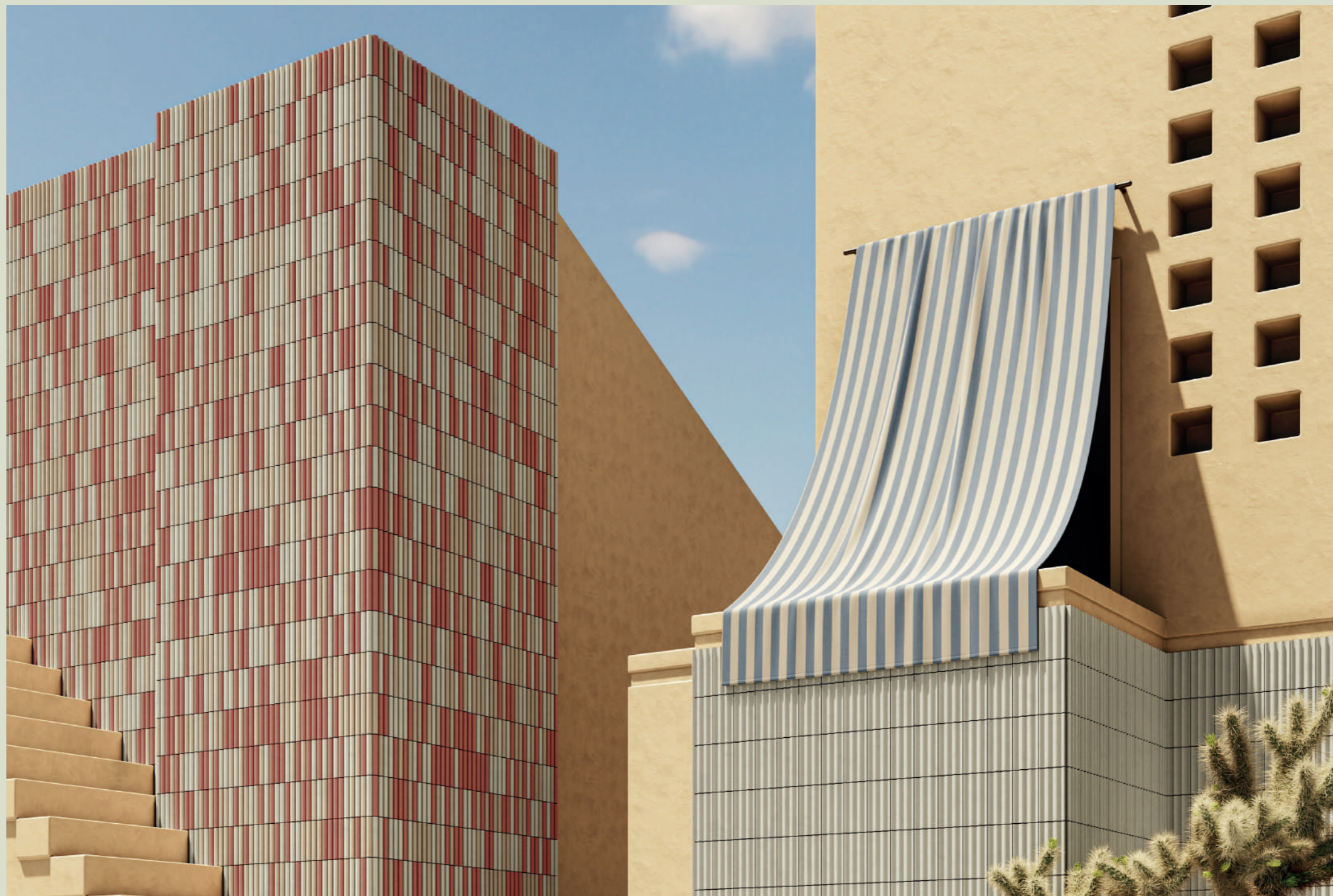
DUO
PAG 71



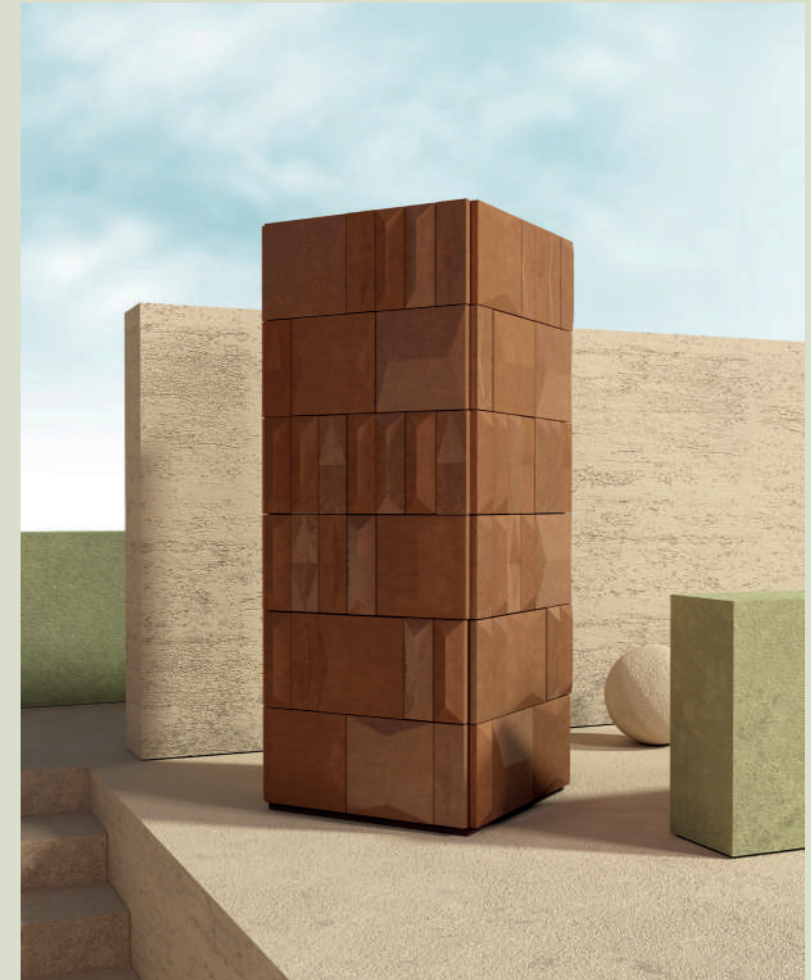
Theia Tiles is a Portuguese company of handmade tiles that started in 2017, Our production is based in Portugal and in its historical traditional techniques of production, where we have skilled craftsmen that carefully bring to life every single piece that we create.

Our tiles are made of earthenware, an extraordinary material, made of just clay and water, simple and eco-friendly materials. Theia's tiles are handmade products, where the earthenware is pressed, fired and hand painted. It is an artisanal production that results in a truly unique product.

We pay careful attention to each step of manufacturing, in a close relation between our design and production teams. The quality is closely controlled to assure the best finishing, resistance and durability. Our main objective while designing and producing our tiles is assuring we offer top quality products. That has been crucial to our increasingly growing recognition.



milano by STUDIOPEPE.



Introducing, Milano, our latest collection, a product of the second collaboration between Theia Tiles and Studiopepe. Drawing inspiration from the vibrant city of Milan and its diverse neighborhoods, this collection is a unique amalgamation of contemporary design and traditional craftsmanship.

[find out more about this collection here](#) ►



milan

*Milano a registered design



velasca



sempioni

technical information

Handmade tiles
w 6 cm x h 18 cm x d 3 cm
w 2" x h 7" x d 1,2"
91 units per sqm
weight:
970 gr
2,14 lb
m² — 28 kg
sqm — 62 lb

* all the sizes are approximate



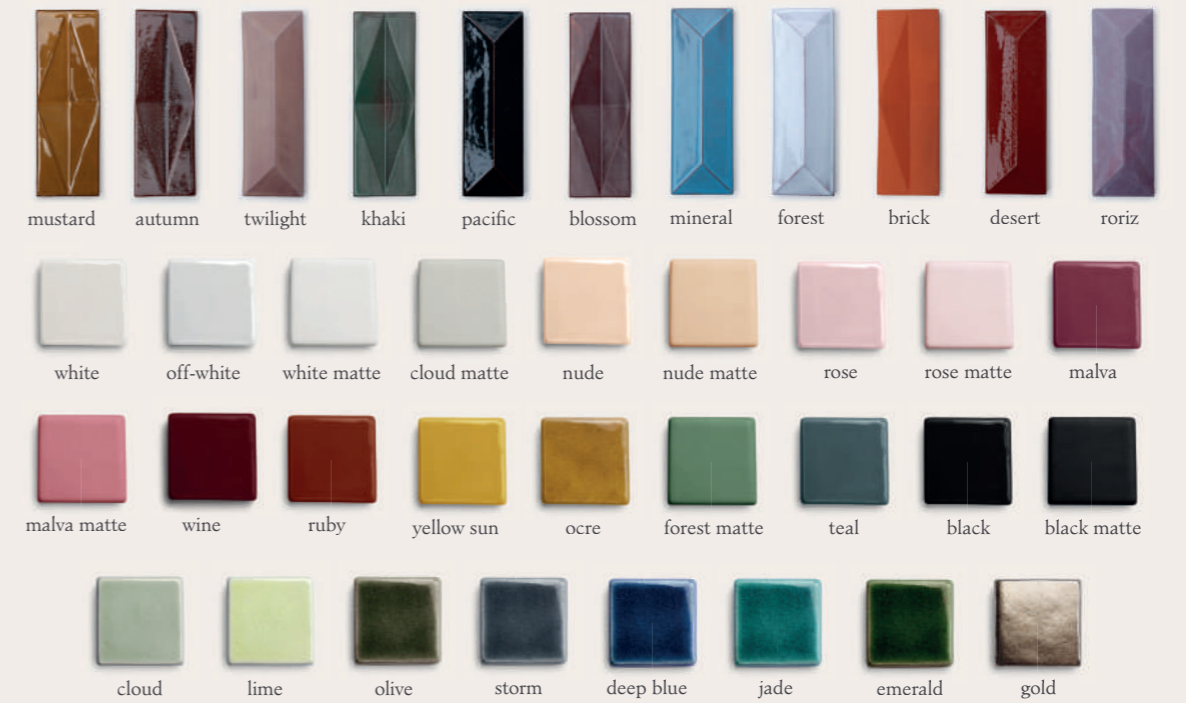
missori

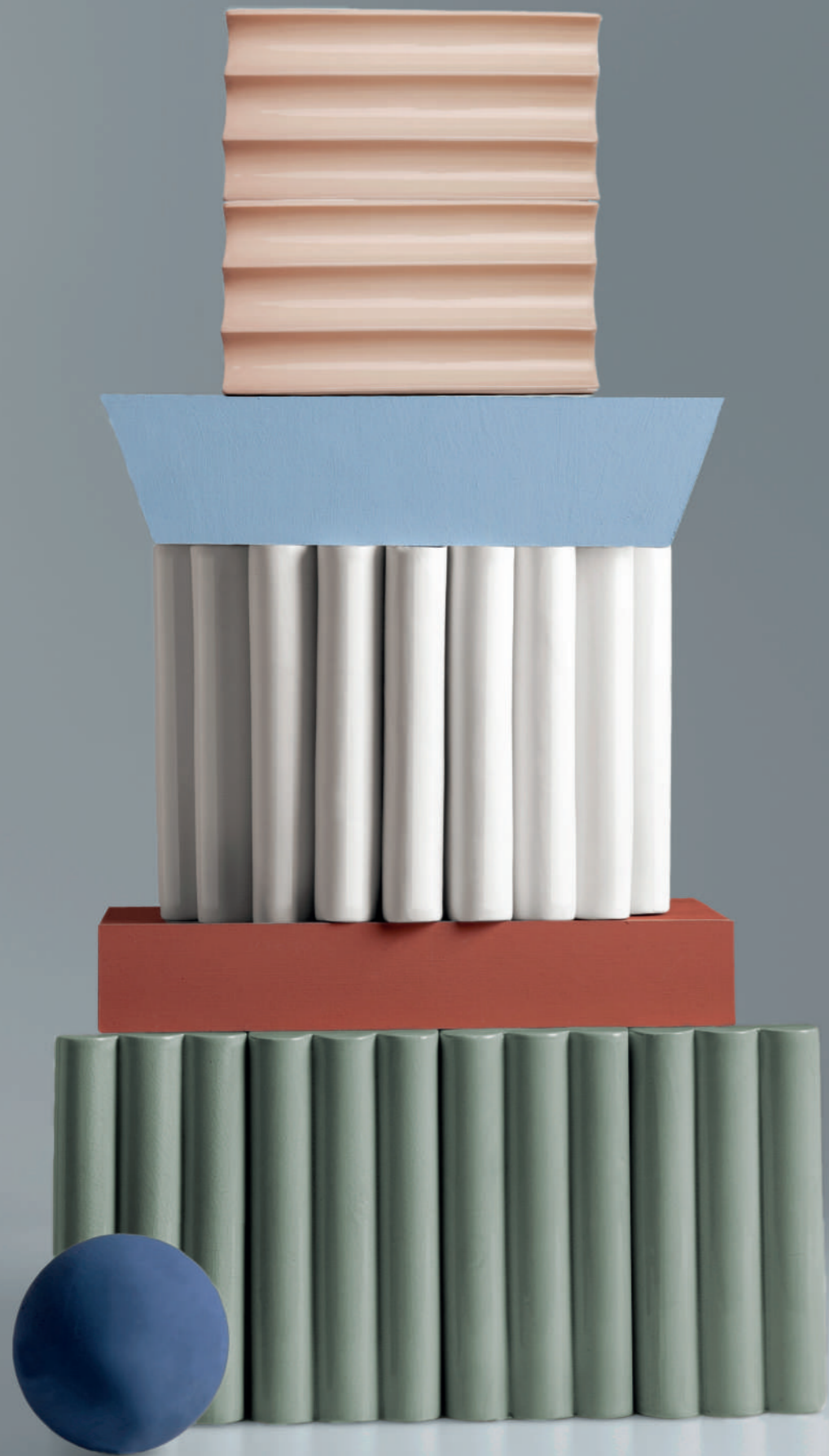
technical information

Handmade tiles
w 18 cm x h 18 cm x d 3 cm
w 7" x h 7" x d 1,2"
80 units per sqm
weight:
970 gr
2,14 lb
m² — 28 kg
sqm — 62 lb

* all the sizes are approximate

colours





mar di by STUDIOPEPE.



Mar Di is a collection designers by Studiopepe for Theia tiles, inspired by the motion of the sea, its waves, with a broader meaning to the theme of travel and exploration. A formal investigation that culminates with four models in which the surfaces interact differently with the light that hits them.

[find out more about this collection here ▶](#)

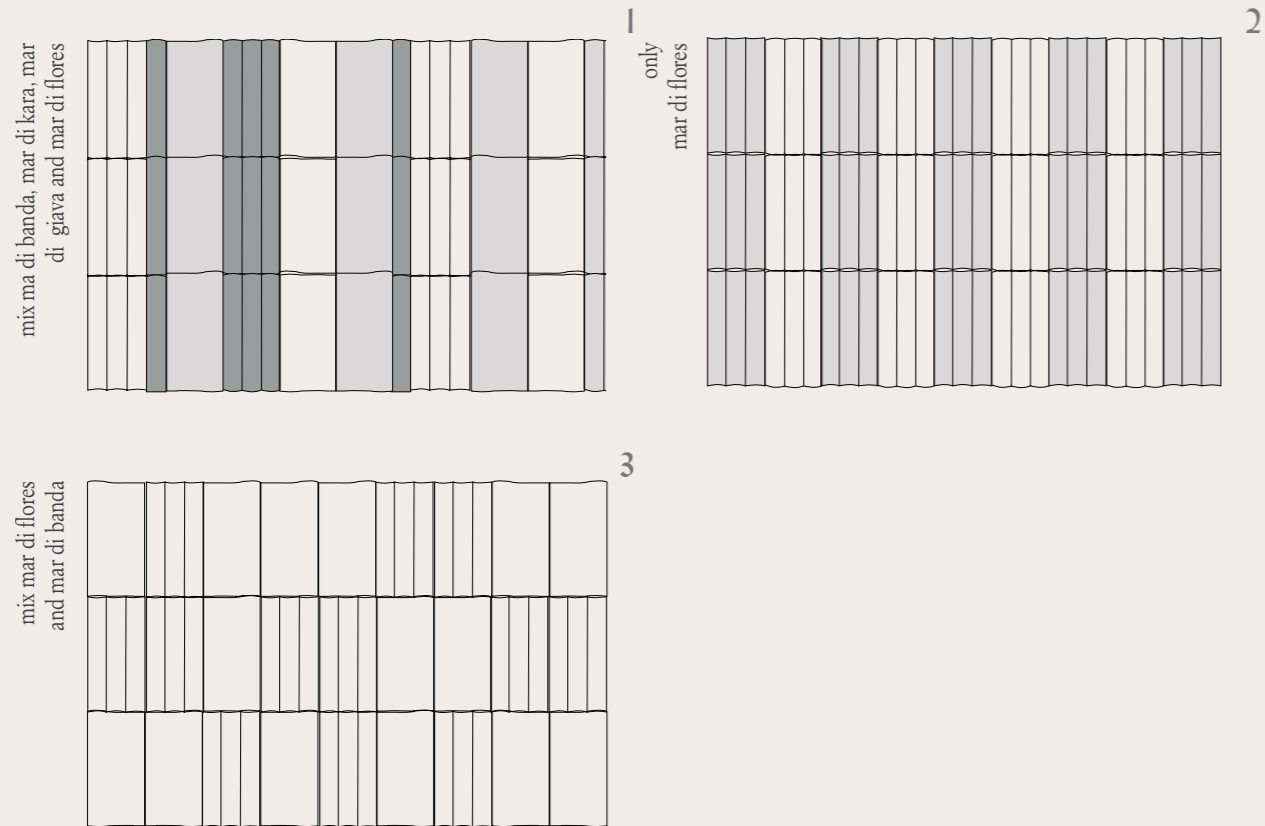


COLLECTION MAR DI

mar di flores
STUDIOPEPE.



placement suggestions



mar di flores

*Mar di is a registered design



technical information

Handmade tiles
w 9 cm x h 18 cm x d 3 cm
w 3,5" x h 7" x d 1,2"
62 units per sqm
weight:
970 gr
2,14 lb
m² — 24,25 kg
sqm — 53,5 lb

* all the sizes are approximate

colours





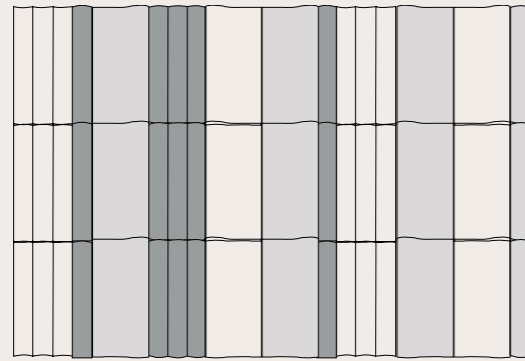
COLLECTION MAR DI

mar di giava
STUDIOPEPE.



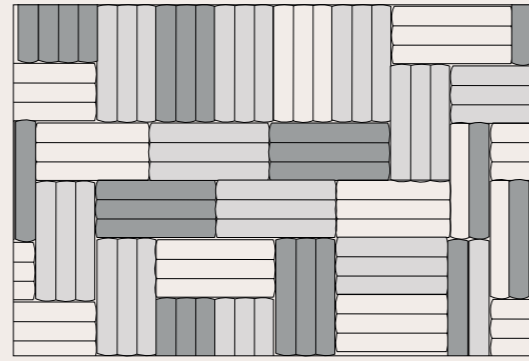
placement suggestions

mix ma di banda, mar di kara, mar di giava and mar di flores



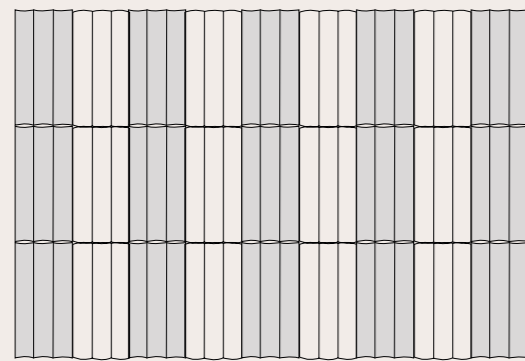
1

mix mar di kara and mar di giava



2

only mar di giava



3

mar di giava

*Mar di is a registered design



technical information

Handmade tiles
 w 9 cm x h 18 cm x d 3 cm
 w 3,5" x h 7" x d 1,2"
 62 units per sqm
 weight:
 970 gr
 2,14 lb
 m² — 24,25 kg
 sqm — 53,5 lb

* all the sizes are approximate

colours



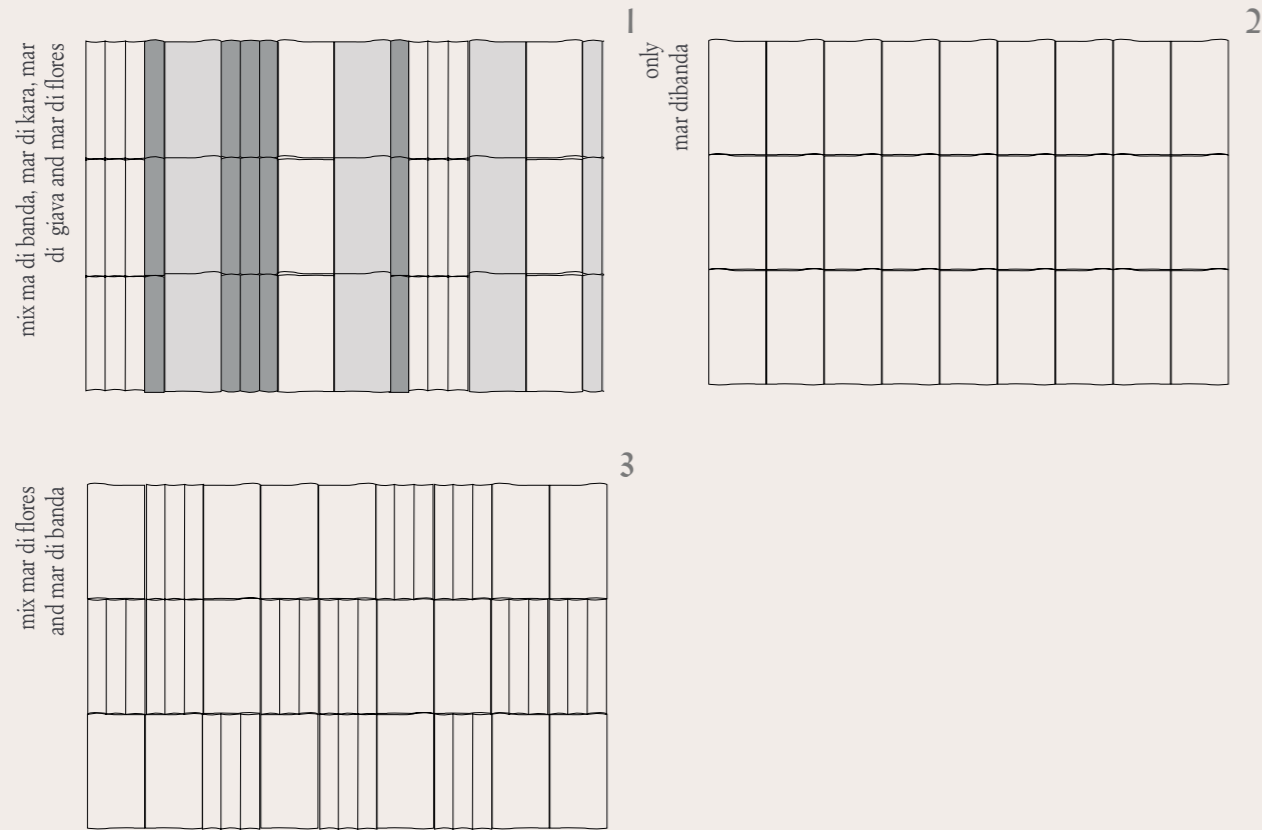


COLLECTION MAR DI

mar di banda
STUDIOPEPE.



placement suggestions



mar di banda

*Mar di is a registered design



technical information

Handmade tiles
 w 9 cm x h 18 cm x d 3 cm
 w 3,5" x h 7" x d 1,2"
 62 units per sqm
 weight:
 970 gr
 2,14 lb
 m² — 24,25 kg
 sqm — 53,5 lb

* all the sizes are approximate

colours



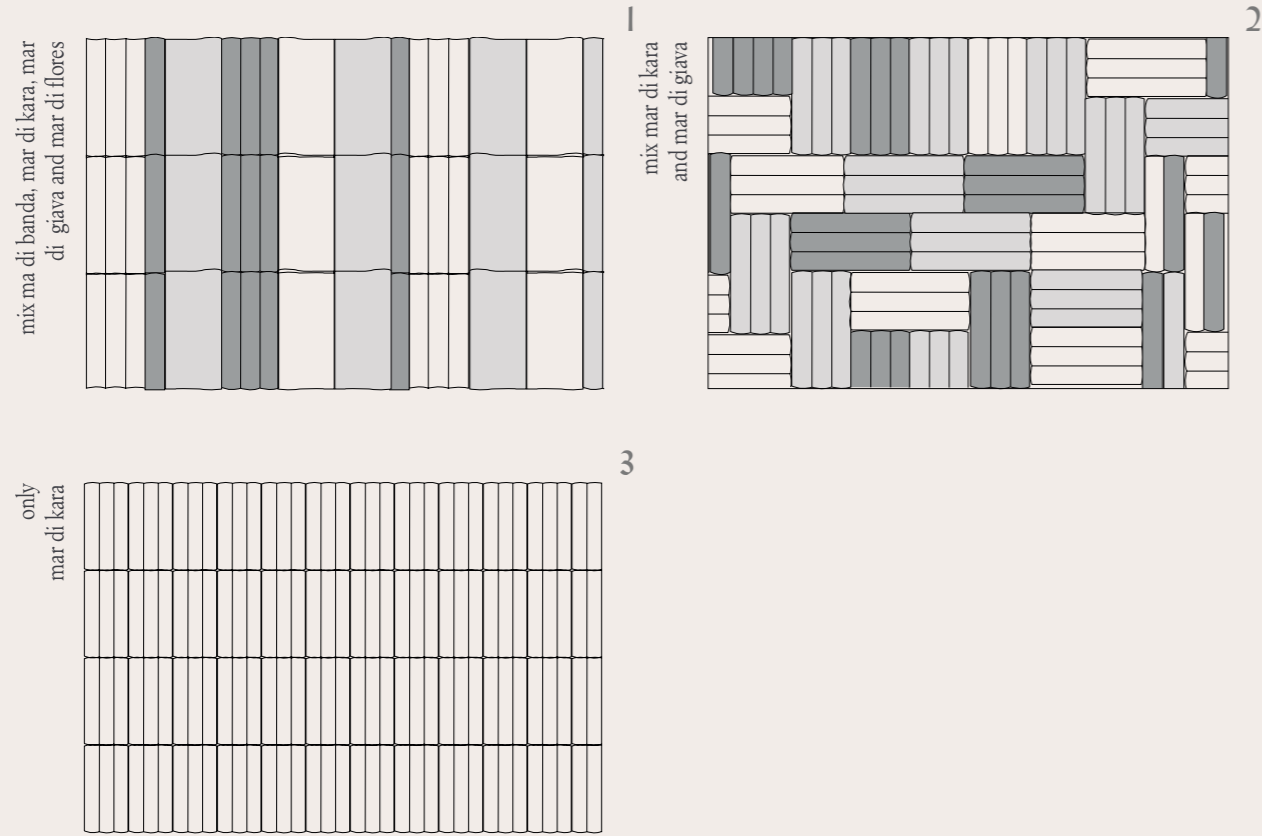


COLLECTION MAR DI

mar di kara
STUDIOPEPE.



placement suggestions



mar di kara

*Mar di is a registered design



technical information

Handmade tiles
w 3 cm x h 18 cm x d 3 cm
w 1,2" x h 7" x d 1,2"
185 units per sqm
weight:
970 gr
2,14 lb
m² — 24,25 kg
sqm — 53,5 lb

* all the sizes are approximate

colours



oblique

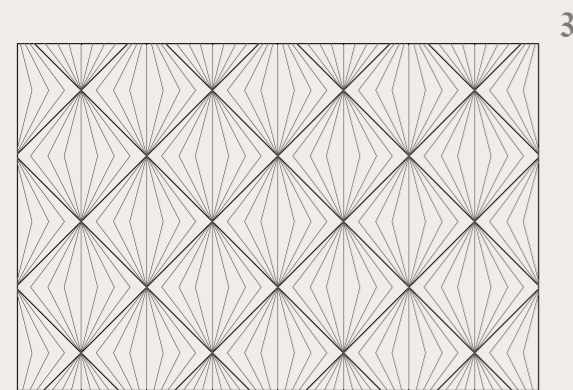
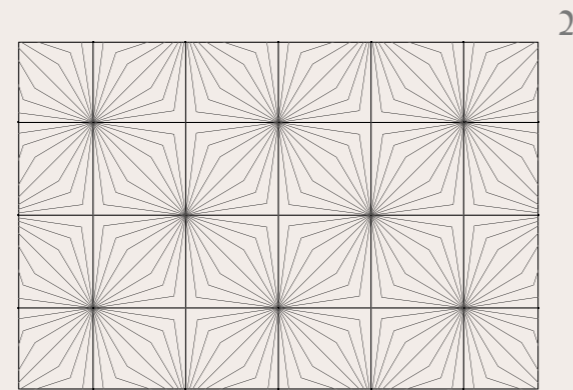


Oblique is inspired by the elegance of Art Deco; formed by a number of diagonal surfaces, this tile creates a *trompe l'oeil* effect. Sturdy and discreet, its bold lines create an elegant tridimensionality that can shine anywhere.

[find out more about this tile here ►](#)

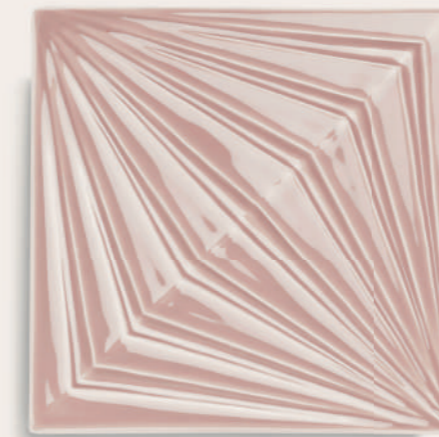


placement suggestions



oblique

*Oblique is a registered design



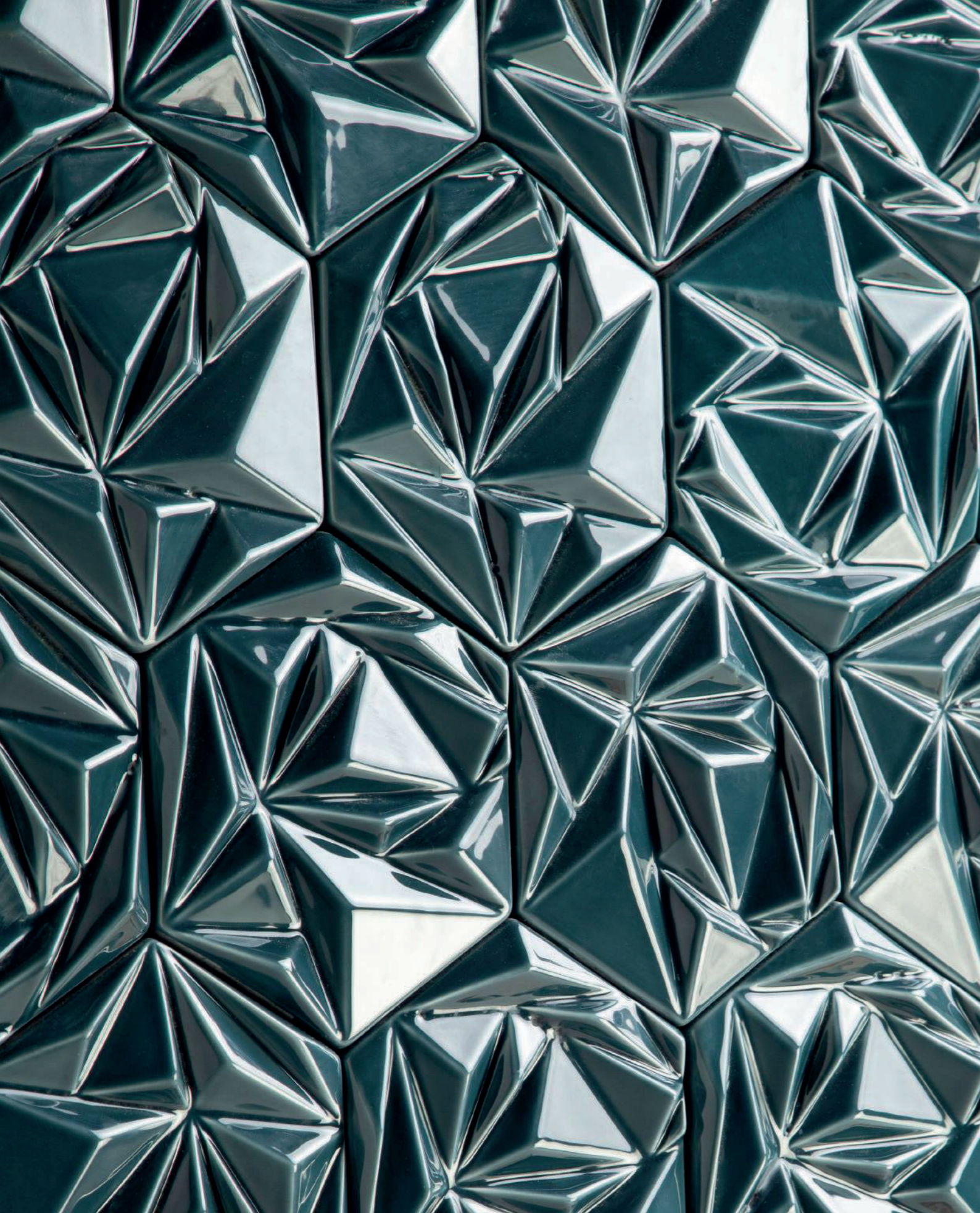
technical information

Handmade tiles
 w 15 cm x h 15 cm x d 2 cm
 w 5,9" x h 5,9" x d 0,8"
 45 units per sqm
 weight:
 690 gr
 1,5 lb
 m² — 31 kg
 sqm — 67,5 lb

* all the sizes are approximate

colours





prisma



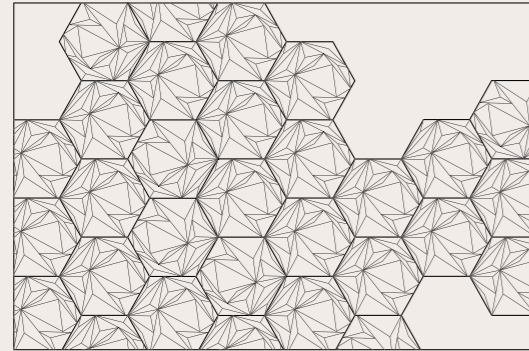
Movement is essential in this tile, with crisp lines, strong shapes and solid shadows coming together in a rhythmic tridimensionality. Prisma is a polygonal tile that creates a kaleidoscopic effect.

[find out more about this tile here](#) ►

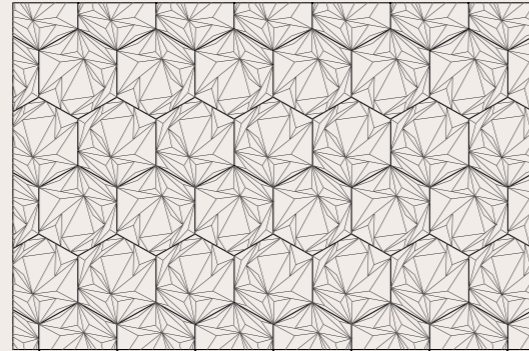


placement suggestions

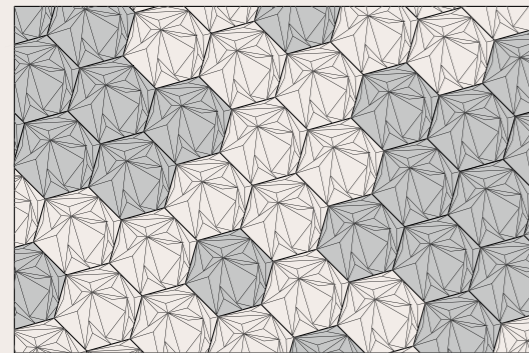
prisma



1



2



3

prisma

*Prisma is a registered design



technical information

Handmade tiles
 w 16 cm x h 13,5 cm x d 2 cm
 w 6,3" x h 5,3" x d 0,8"
 64 units per sqm
 weight:
 360 gr
 0,8 lb
 m² — 23 kg
 sqm — 51,2 lb

* all the sizes are approximate

colours





mondego

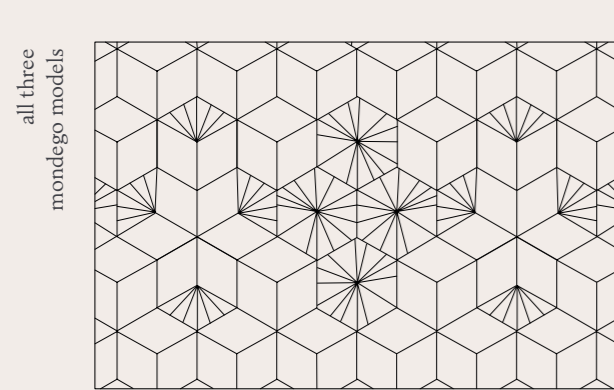


An ode to its own roots, inspired by the green hills that form the center of Portugal, Mondego collection encompasses three tiles, ranging from a soft surfaced tile, a fully striped tile and a half striped tile.

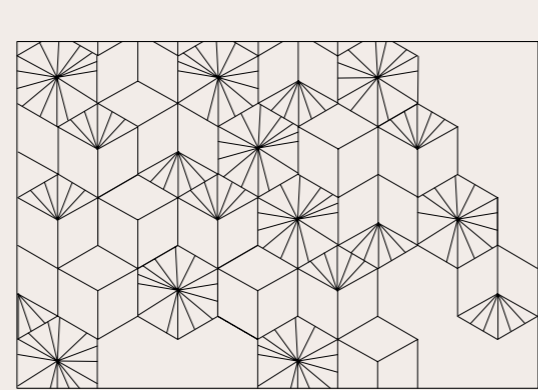
[find out more about this tile here](#) ►



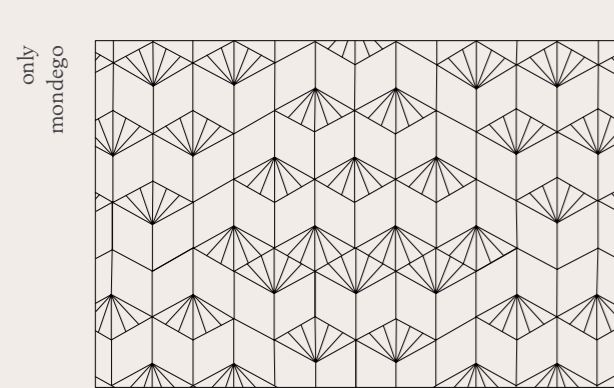
placement suggestions



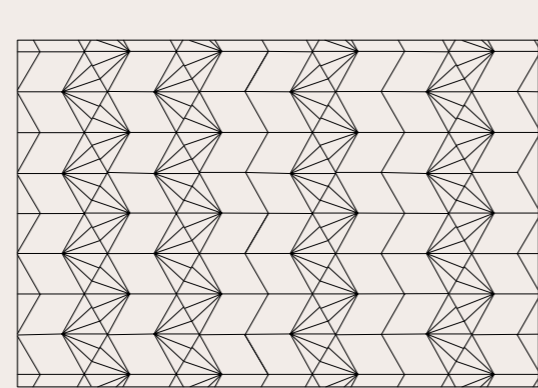
1



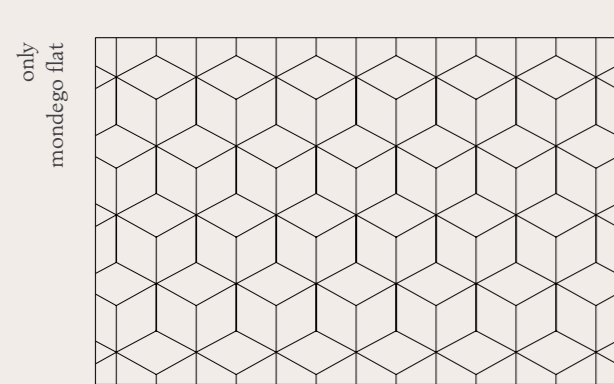
2



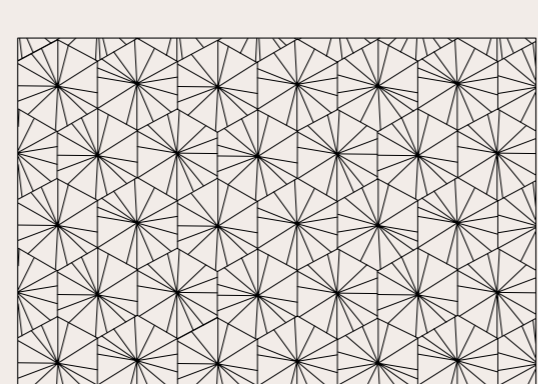
3



4



5



6

mondego

*Mondego is a registered design



Mondego Flat



Mondego



Mondego Stripes

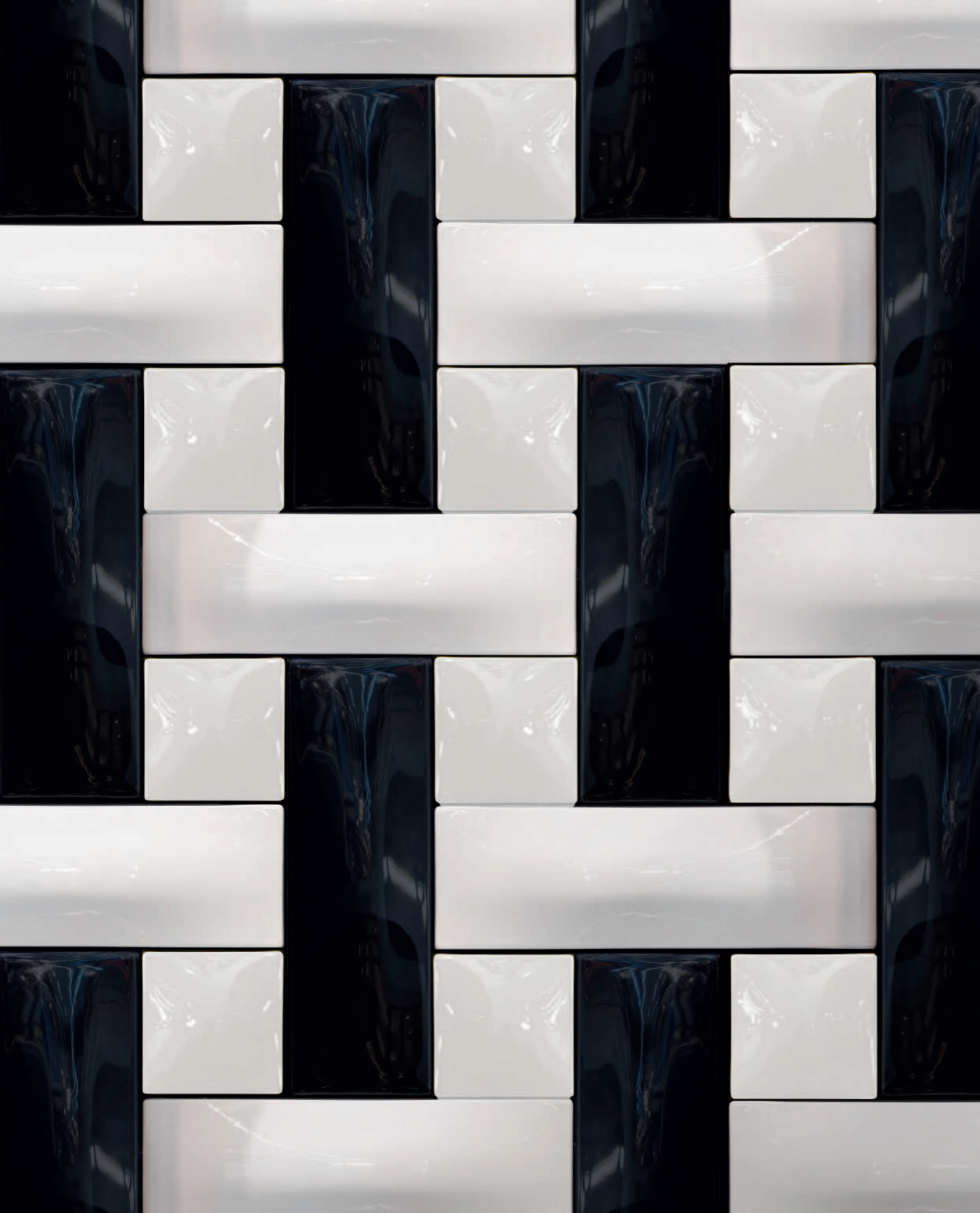
technical information

Handmade tiles
w 13,5 cm x h 16 cm x d 2 cm
w 5,3" x h 6,3" x d 0,8"
64 units per sqm
weight:
380 gr
0,84 lb
m² — 24,3 kg
sqm — 53,8 lb

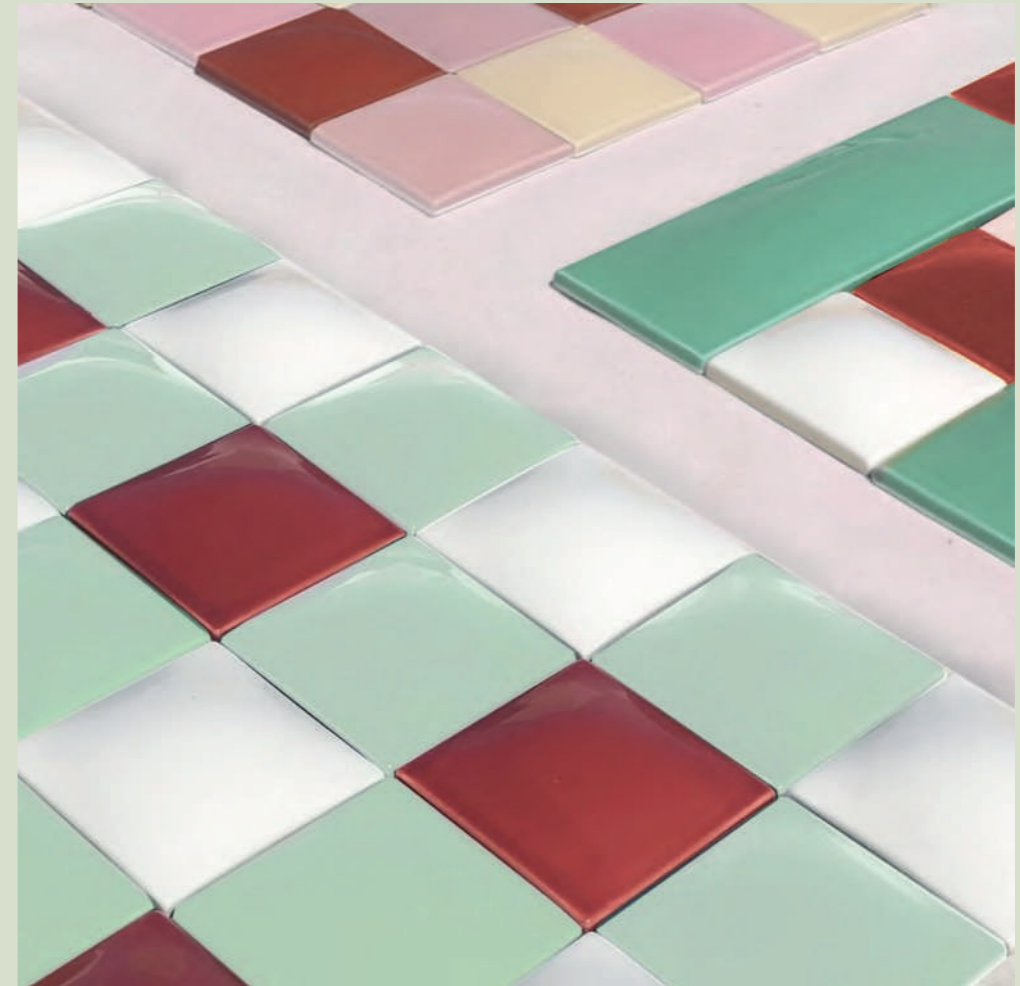
* all the sizes are approximate

colours





sarah by MAISON SARAH LAVOINE

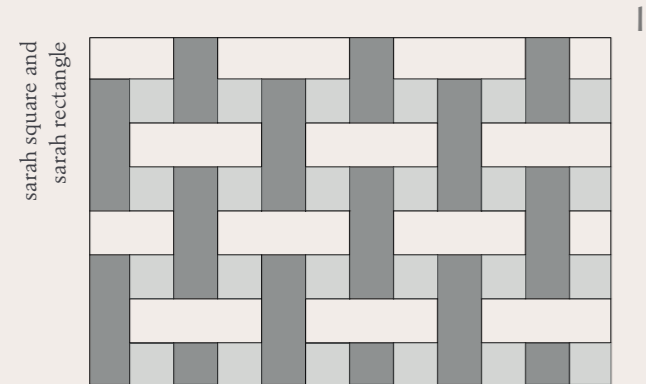


Theia and Maison Sarah Lavoine have partnered to create a collection of gem-like tiles. There are two graphic models that can be combined to create an array of displays.

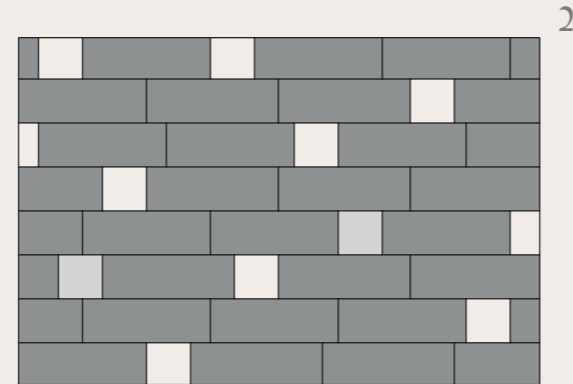
[find out more about this tile here](#) ▶



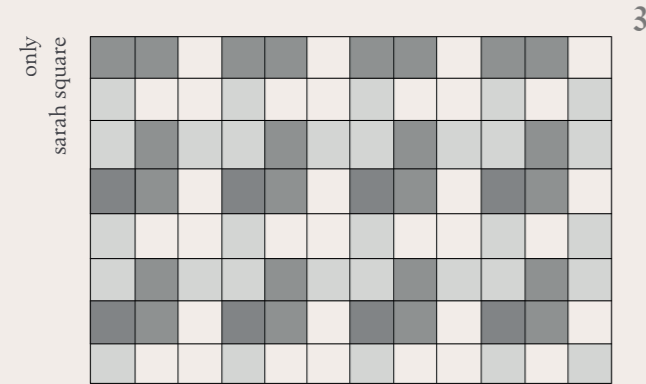
placement suggestions



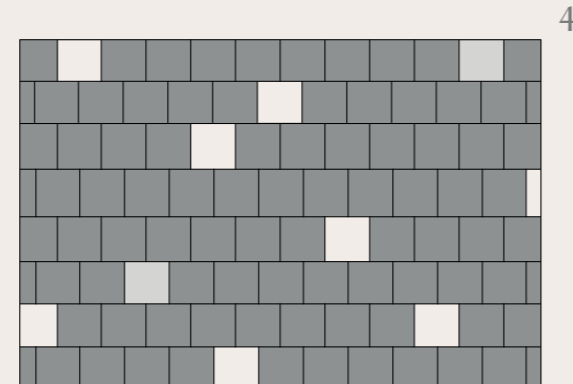
1



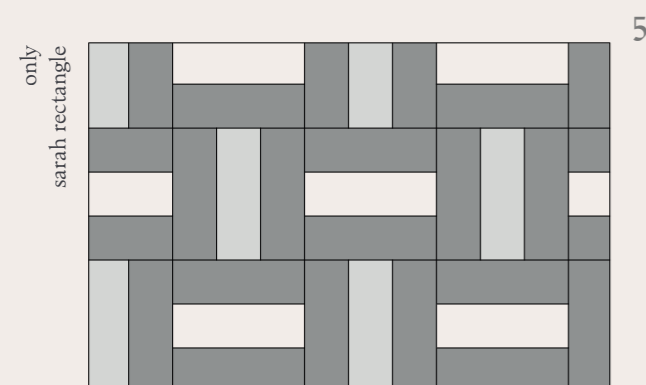
2



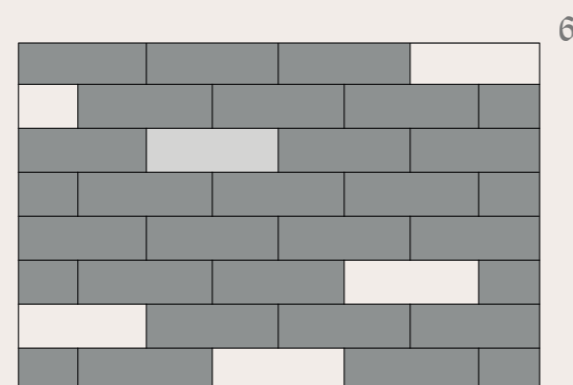
3



4



5



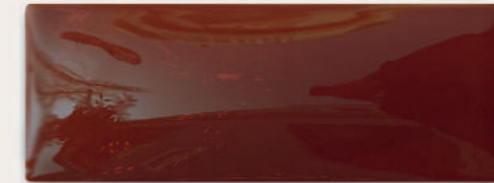
6

sarah

*Sarah is a registered design



Sarah square



Sarah rectangle

technical information

Handmade tiles
w 8 cm x h 8 cm x d 2 cm
w 3" x h 3" x d 0,8"
156 units per sqm
weight:
170 gr
0,37 lb
m² — 25 kg
sqm — 55,2 lb

Handmade tiles
w 24 cm x h 8 cm x d 2 cm
w 9" x h 3" x d 0,8"
64 units per sqm
weight:
430 gr
0,95 lb
m² — 22 kg
sqm — 48,5 lb

* all the sizes are approximate

* all the sizes are approximate

colours



pattern



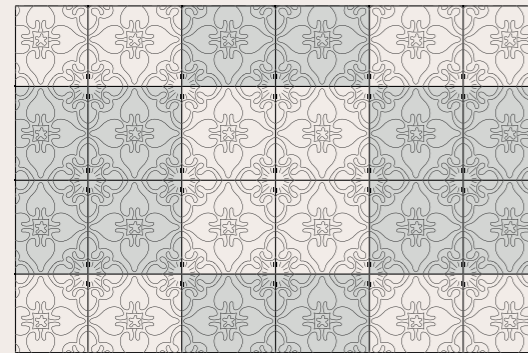
Sensual and evocative, this art nouveau tile transports you to a time of romance. The Pattern tile is embedded in the mystique of a bygone era and once out of its original context can help create the most modern of spaces.

[find out more about this tile here](#) ►

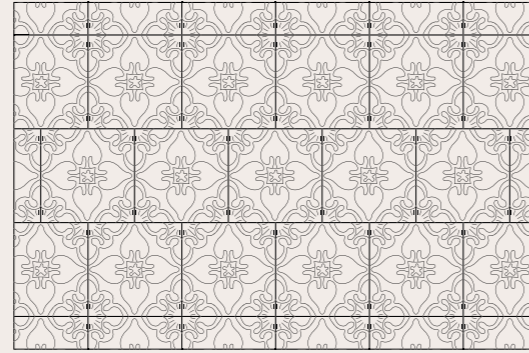


placement suggestions

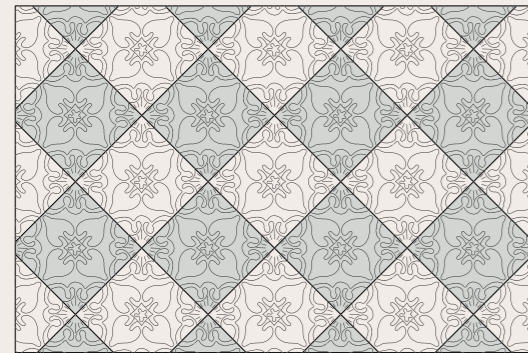
pattern



1



2



3

pattern

*Pattern is a registered design



technical information

Handmade tiles
 w 15 cm x h 15 cm x d 1 cm
 w 5,9" x h 5,9" x d 0,4"
 45 units per sqm
 weight:
 380 gr
 0,84 lb
 m² — 17,1 kg
 sqm — 37,8 lb

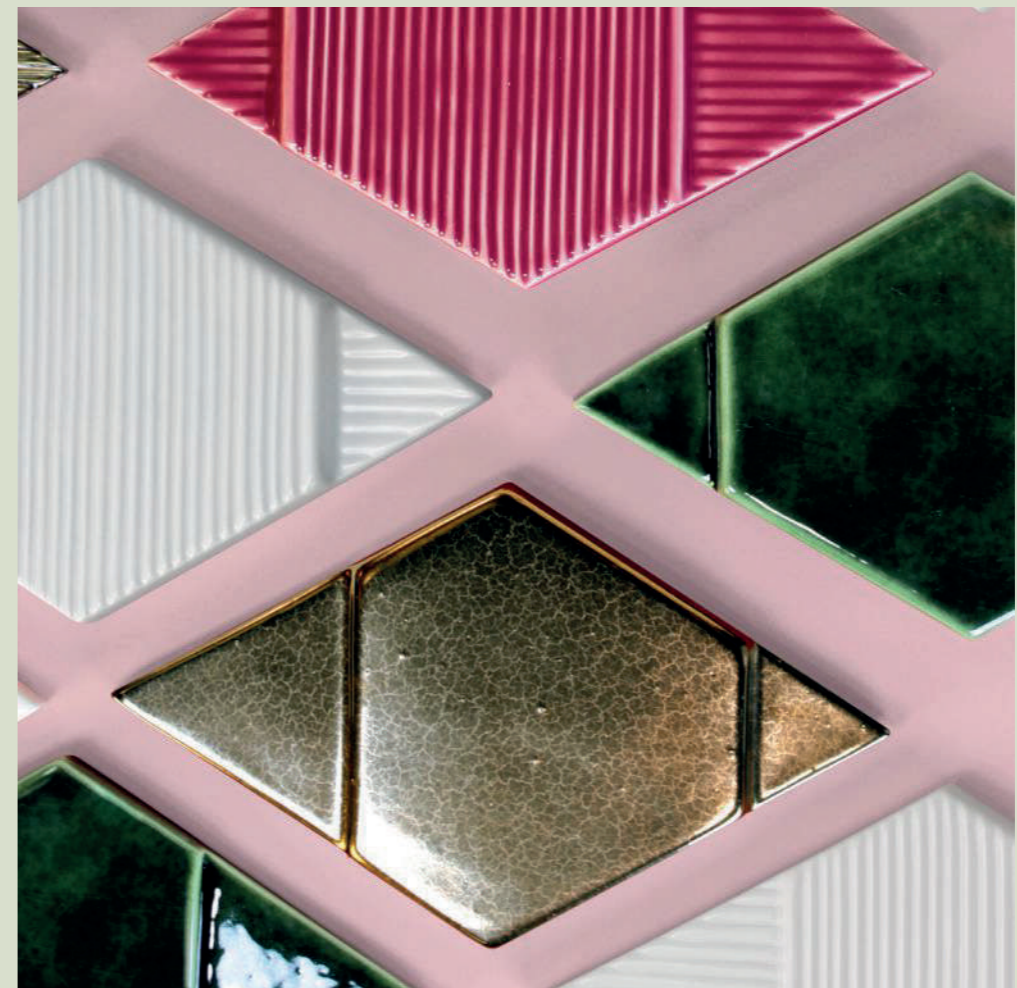
* all the sizes are approximate

colours





tua

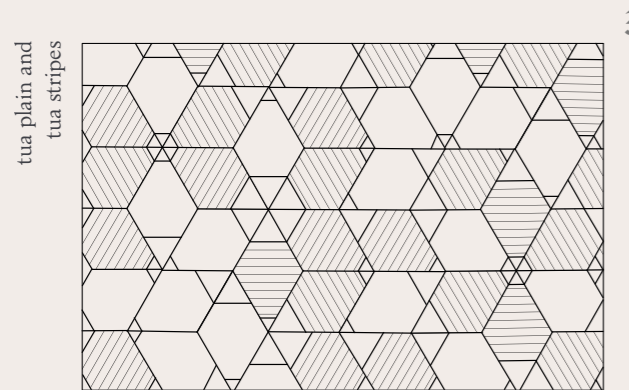
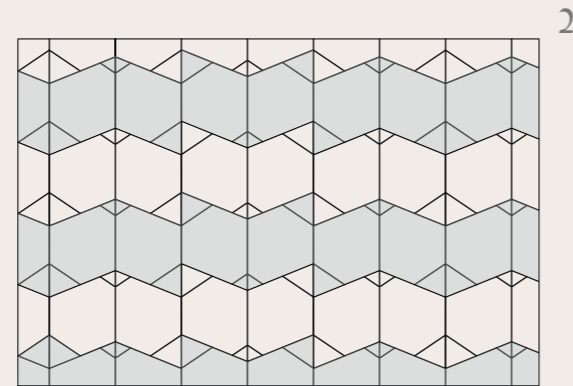
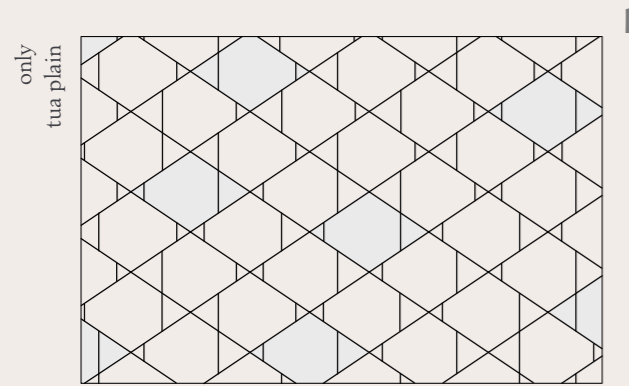


The Tua collection is composed by two tiles: Tua Plain, which is flat surfaced, and Tua Stripes, equal in shape but composed by slightly asymmetric lines that give a strong sense of movement. Both tiles plays with volumetry, allowing the same tile to unfold in an array of shapes.

[find out more about this tile here](#) ▶

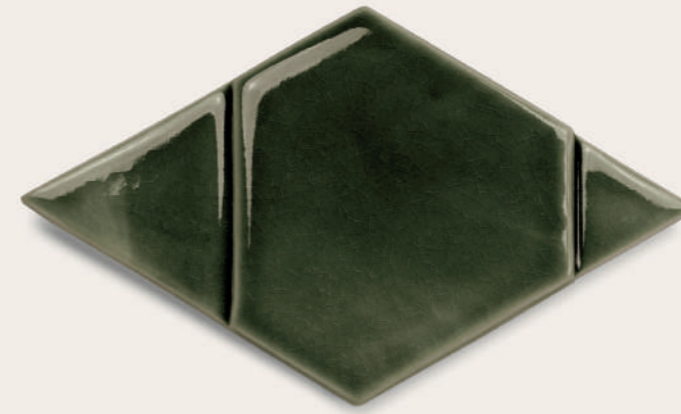


placement suggestions



tua

*Tua is a registered design

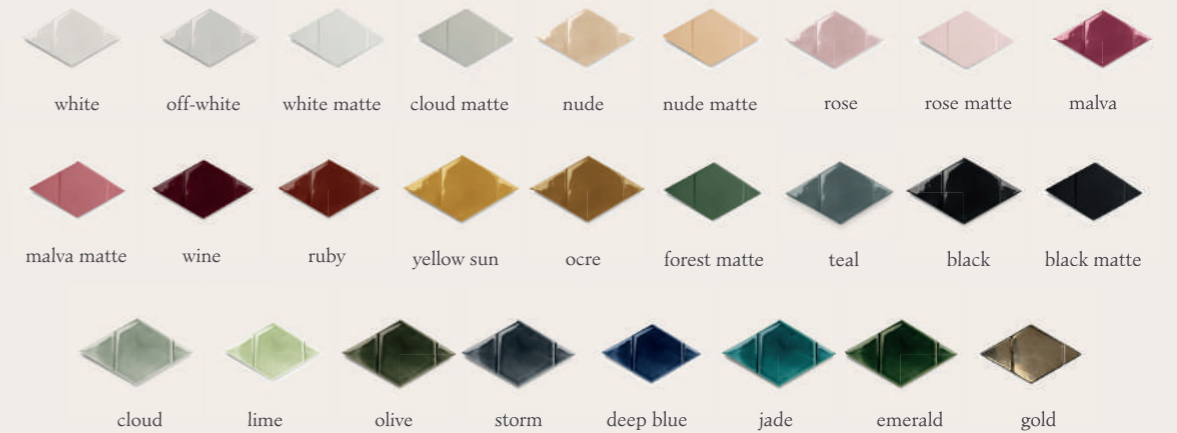


technical information

Handmade tiles
w 16 cm x h 28 cm x d 2 cm
w 6,3" x h 11" x d 0,8"
42 units per sqm
weight:
635 gr
1,4 lb
m² — 26,7 kg
sqm — 58,8 lb

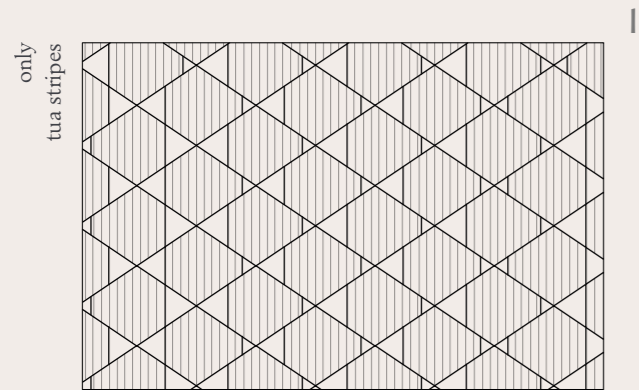
* all the sizes are approximate

colours

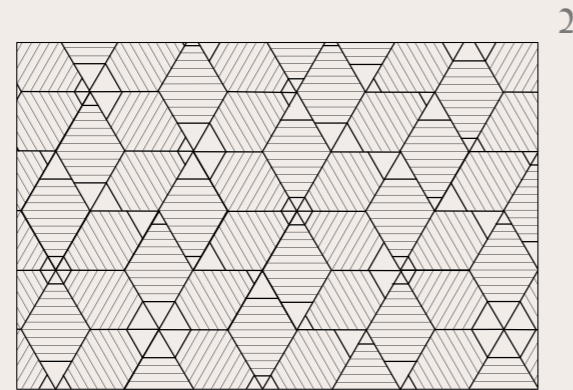




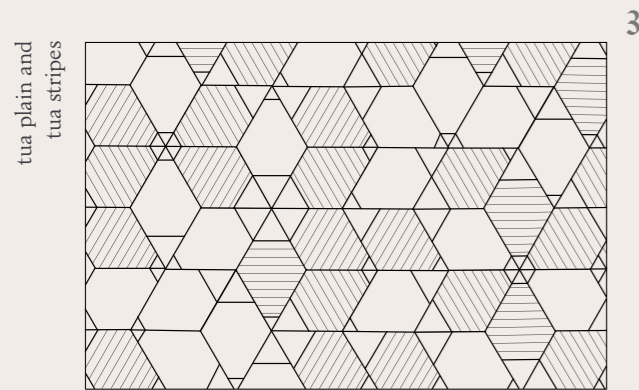
placement suggestions



1



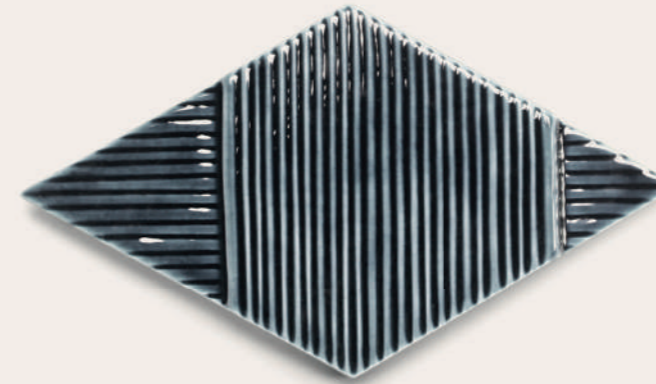
2



3

tua stripes

*Tua stripes is a registered design



technical information

Handmade tiles
w 16 cm x h 28 cm x d 2 cm
w 6,3" x h 11" x d 0,8"
42 units per sqm
weight:
635 gr
1,4 lb
m² — 26,7 kg
sqm — 58,8 lb

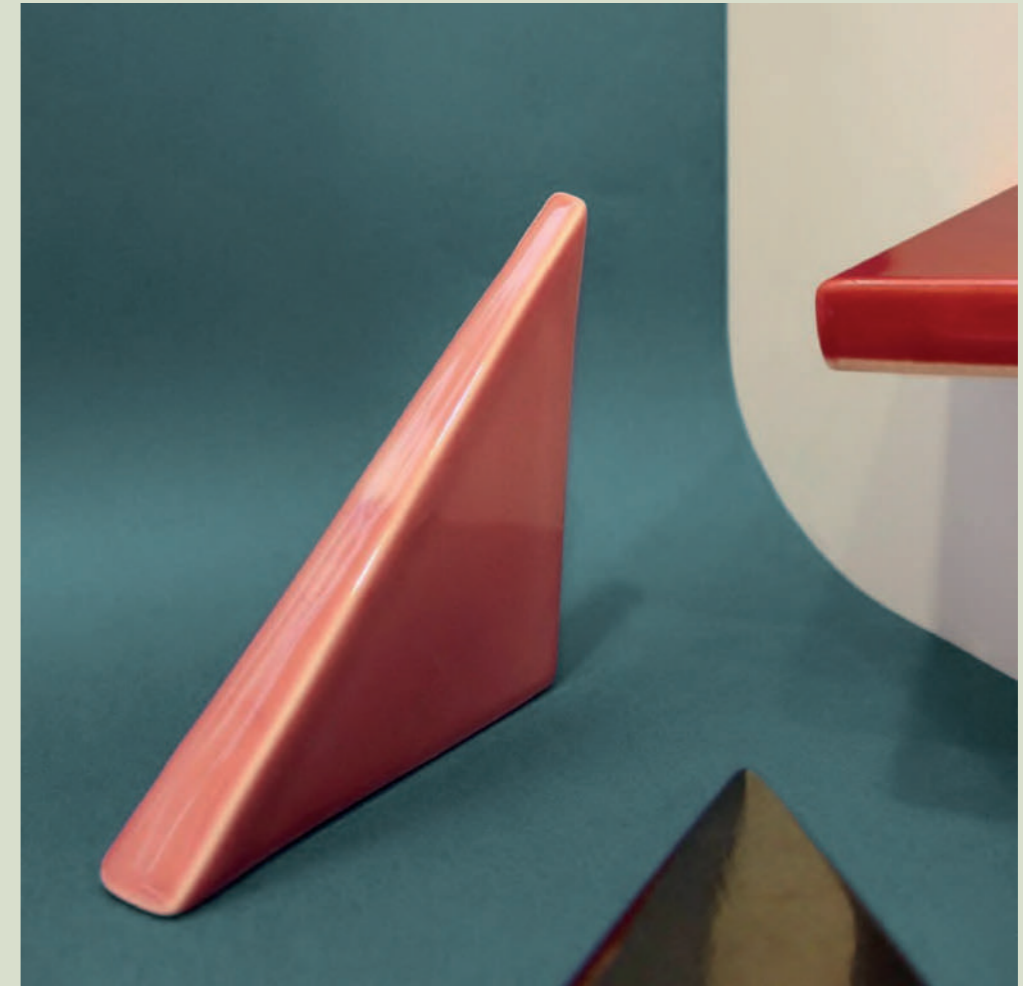
* all the sizes are approximate

colours





tejo

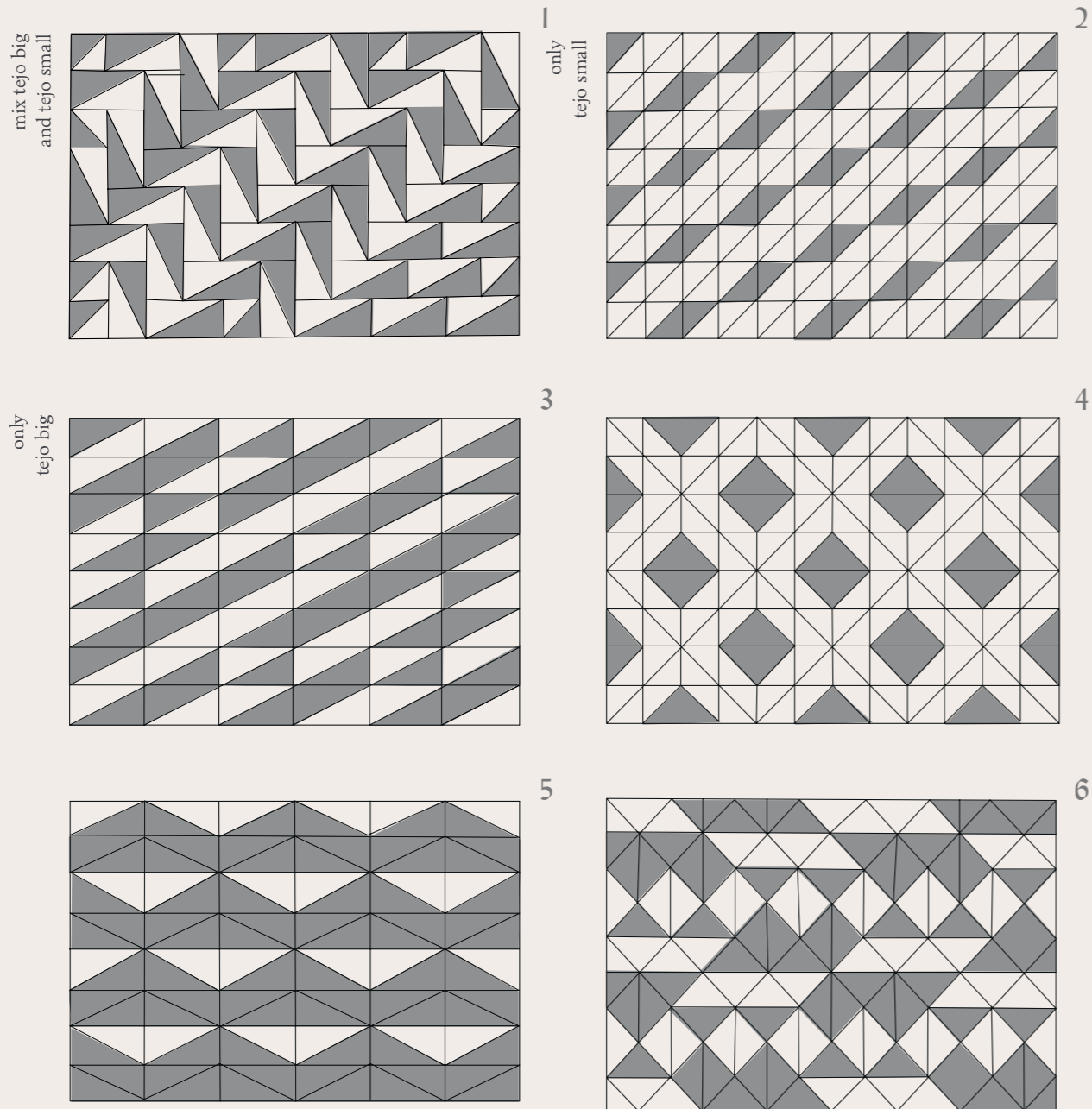


Tejo is rooted in the ancient Portuguese nautical tradition. An iconic collection inspired by the ocean, composed of two tiles with different sizes, which together create a vibrating play of delicate shadows over the mosaic's regular surface.

[find out more about this tile here](#) ▶



placement suggestions



tejo

*Tejo is a registered design



Tejo small



Tejo big

technical information

Handmade tiles
 w 12,5 cm x h 12,5 cm x d 2 cm
 w 5" x h 5" x d 0,8"
 128 units per sqm 64 flat plus
 64 tridimensional
 weight:
 200 gr
 0,44 lb
 m² — 25,6 kg
 sqm — 56,3 lb

Handmade tiles
 w 25 cm x h 12,5 cm x d 2 cm
 w 10" x h 5" x d 0,8"
 64 units per sqm
 weight:
 290 gr
 0,64 lb
 m² — 18,6 kg
 sqm — 40,9 lb

* all the sizes are approximate

* all the sizes are approximate

colours





douro

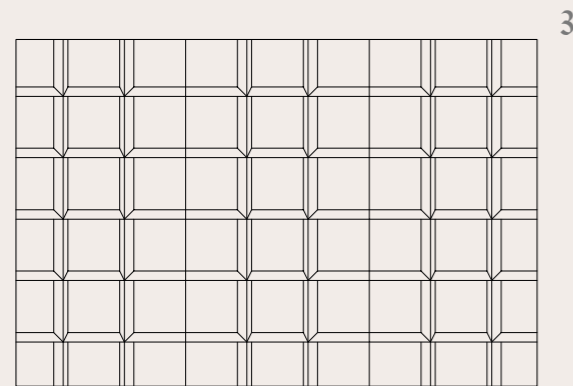
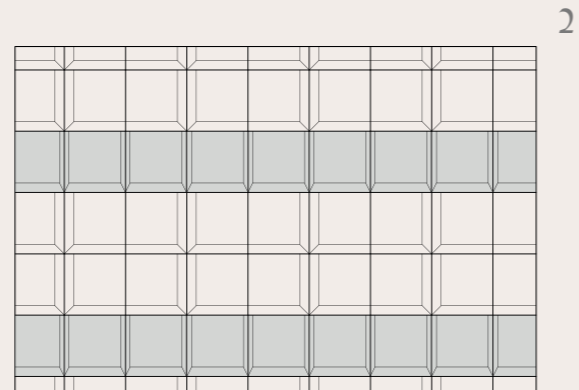
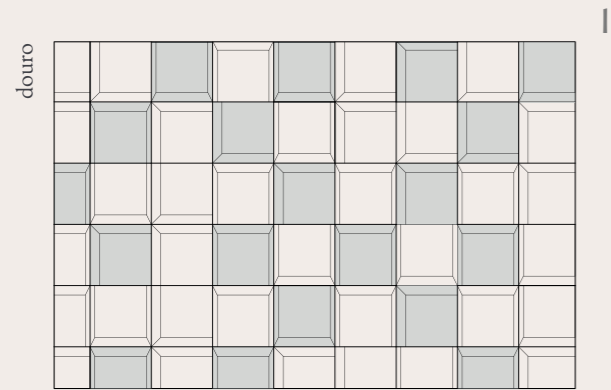


The Douro tiles are homonymous to the northern Portuguese river, named after gold itself. With two different tiles, each with different tilted corners, their shape mimics the gentle movement of water.

[find out more about this tile here ▶](#)

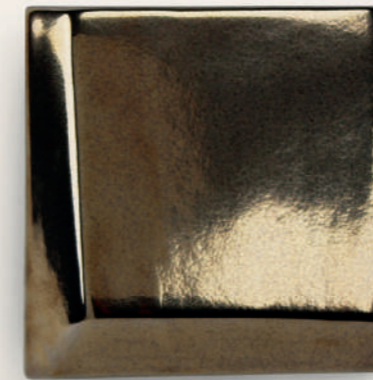


placement suggestions



douro

*Douro is a registered design

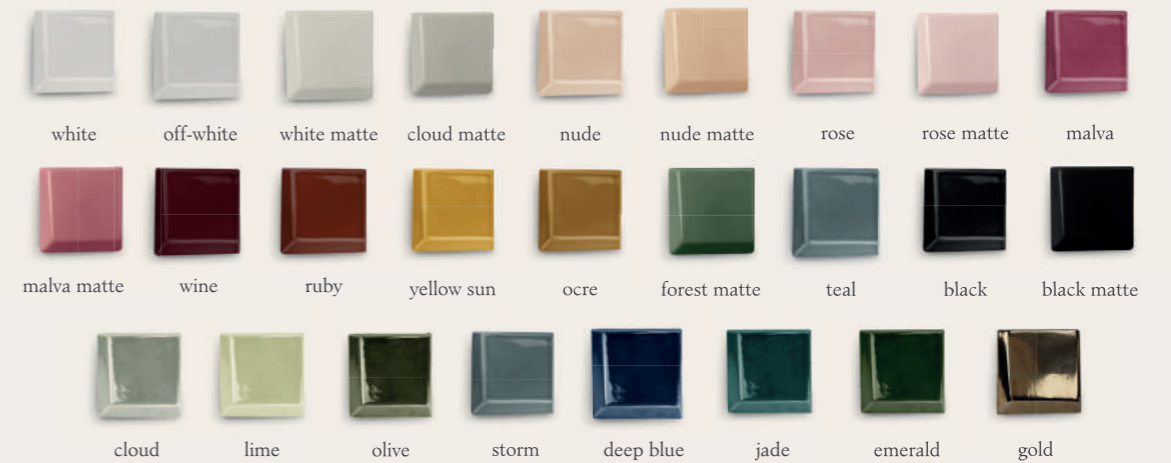


technical information

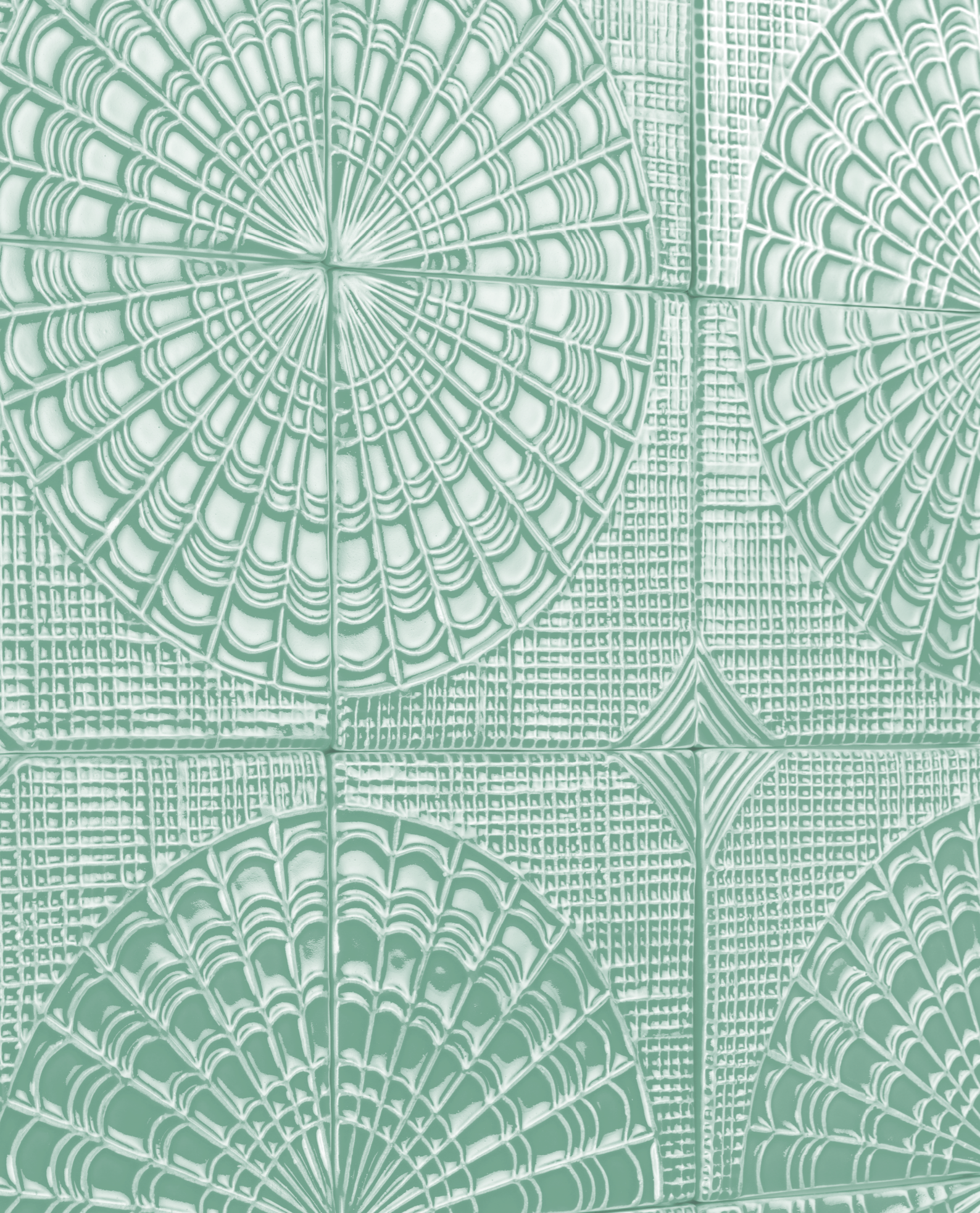
Handmade tiles
 w 10 cm x h 10 cm x d 2 cm
 w 4" x h 4" x d 0,8"
 100 units per sqm
 weight:
 240 gr
 0,53 lb
 m² — 24 kg
 sqm — 53 lb

* all the sizes are approximate

colours



gaudí

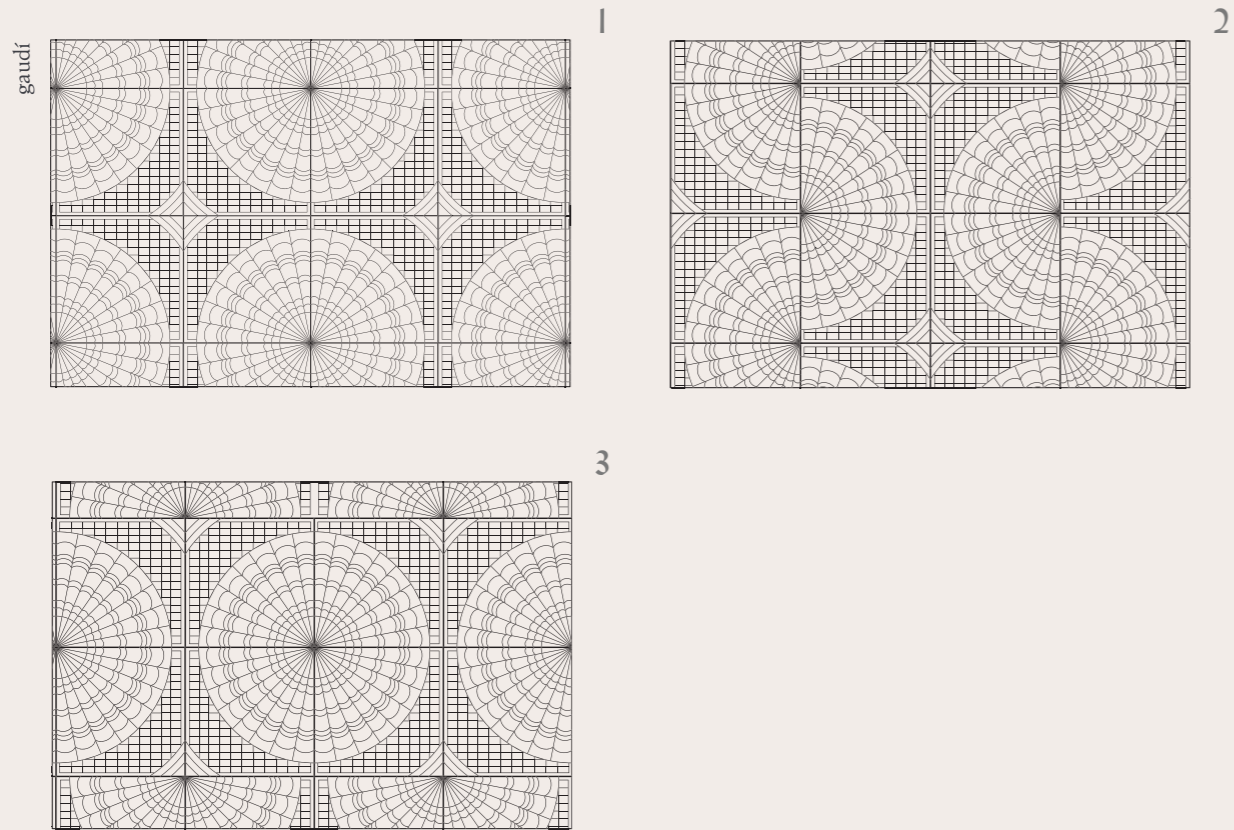


Laced blankets, crochet throws and knitted mantles are at the heart of Gaudí. Handmade is the focal point to the Gaudí tile, where soft lines create a weft for an intricate lace to evolve. The result is a tile which is antique in its look, but contemporary in its use.

[find out more about this tile here](#) ►

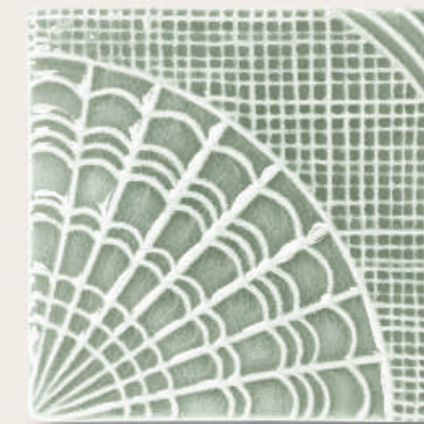


placement suggestions



gaudí

*Gaudí is a registered design

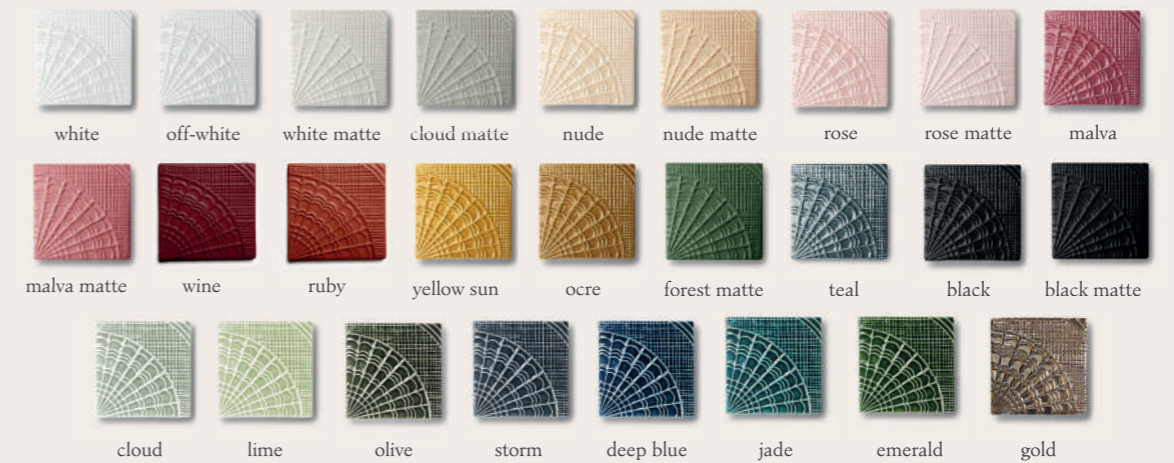


technical information

Handmade tiles
 w 15 cm x h 15 cm x d 1 cm
 w 5,9" x h 5,9" x d 0,4"
 45 units per sqm
 weight:
 380 gr
 0,84 lb
 m² — 17,1 kg
 sqm — 37,8 lb

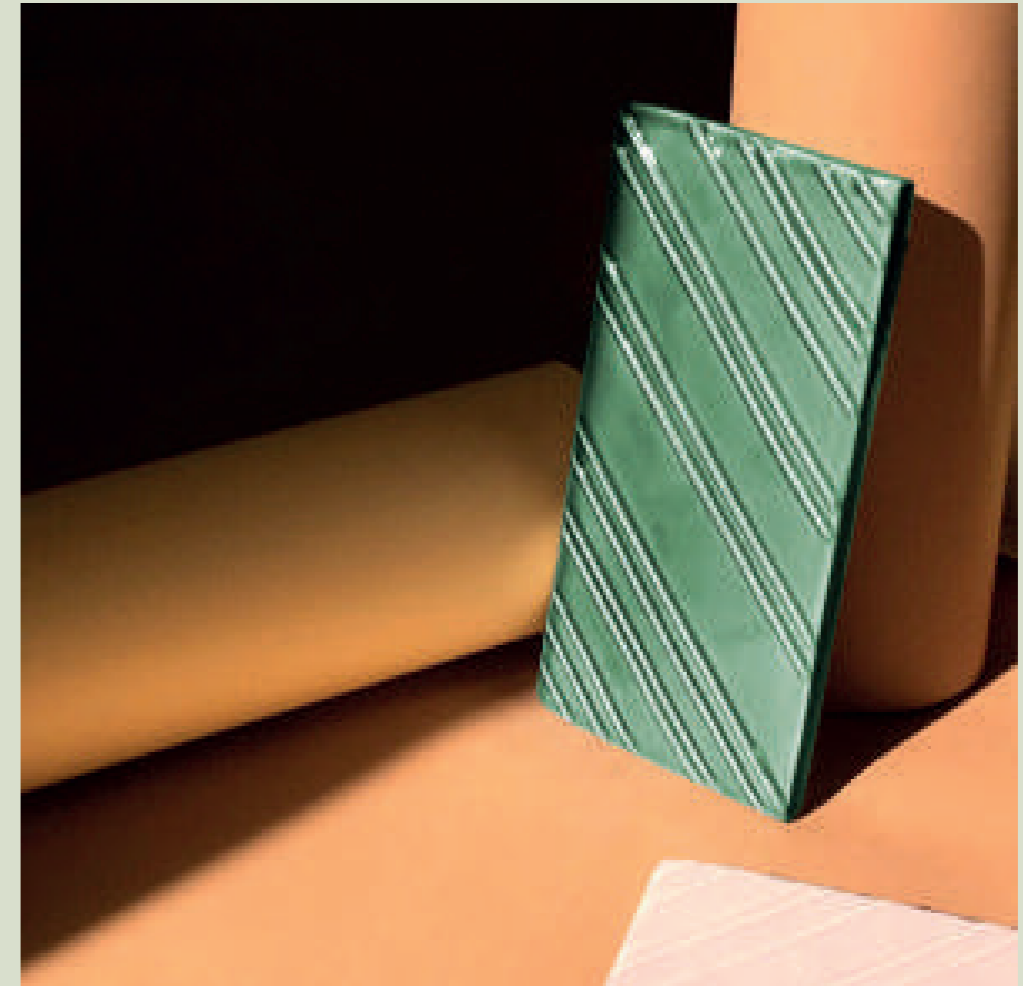
* all the sizes are approximate

colours





stripes

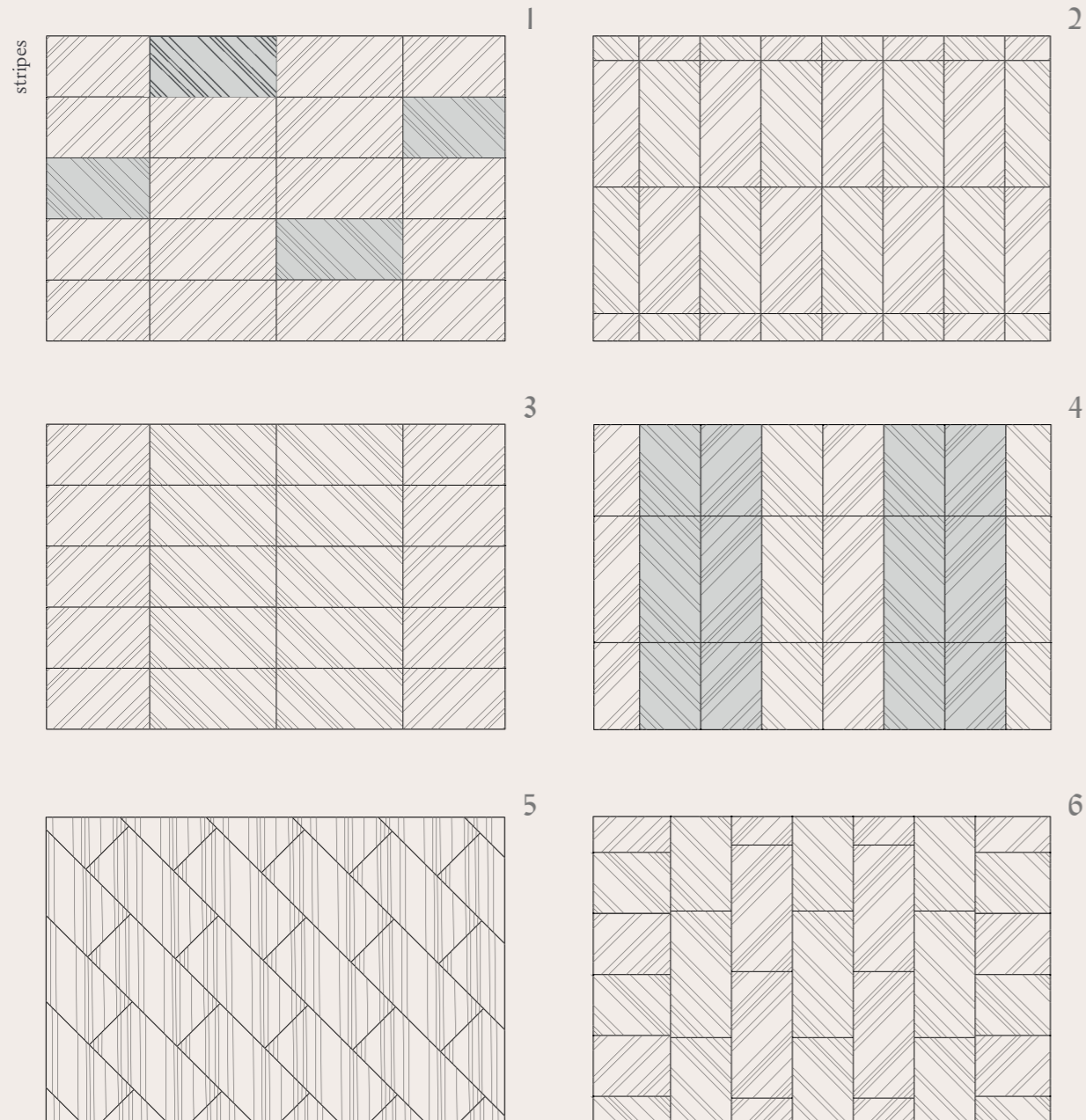


Stripes pays homage to the 1960's. There are two tile designs with different striped patterns, which together can create an immensity of designs, from profuse rhombus to elegant stripes.

[find out more about this tile here](#) ►

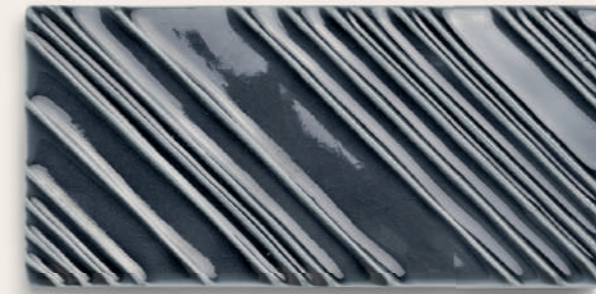


placement suggestions



stripes

*Stripes is a registered design



technical information

Handmade tiles
 w 20 cm x h 10 cm x d 1 cm
 w 7,9" x h 4" x d 0,4"
 50 units per sqm
 weight:
 380 gr
 0,84 lb
 m² — 19 kg
 sqm — 42 lb

* all the sizes are approximate

colours





duo

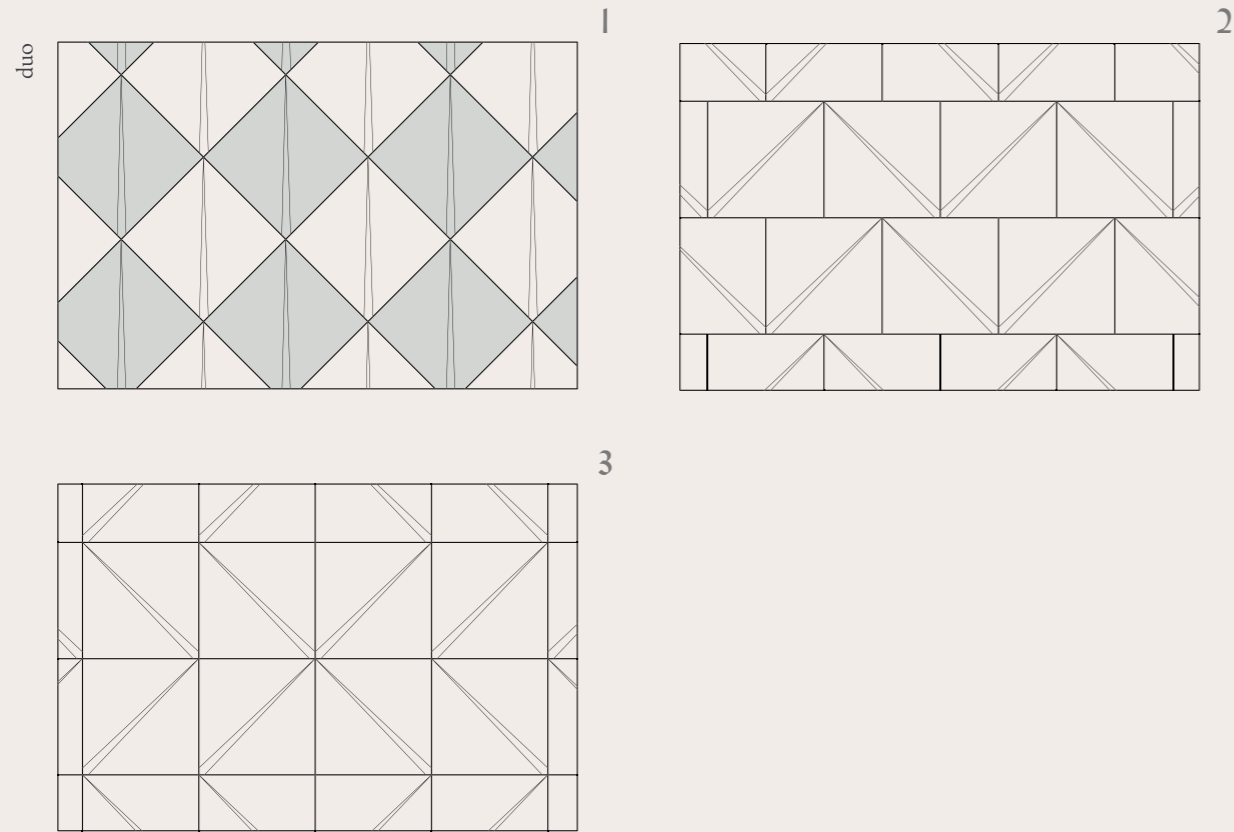


Duality is essential in this tile. One flat surface and another tilted, Duo plays with the idea of opposites. Large and strongly built, it is ideal for large areas; it can be used in more than one color to accentuate its ambivalent traces, or in a solid color to let its contours shine.

[find out more about this tile here](#) ▶



placement suggestions



duo

*Duo is a registered design



technical information

Handmade tiles
 w 20 cm x h 20 cm x d 4 cm
 w 7,9" x h 7,9" x d 1,6"
 25 units per sqm
 weight:
 970 gr
 2,14 lb
 m² — 24,25 kg
 sqm — 53,5 lb

* all the sizes are approximate

colours

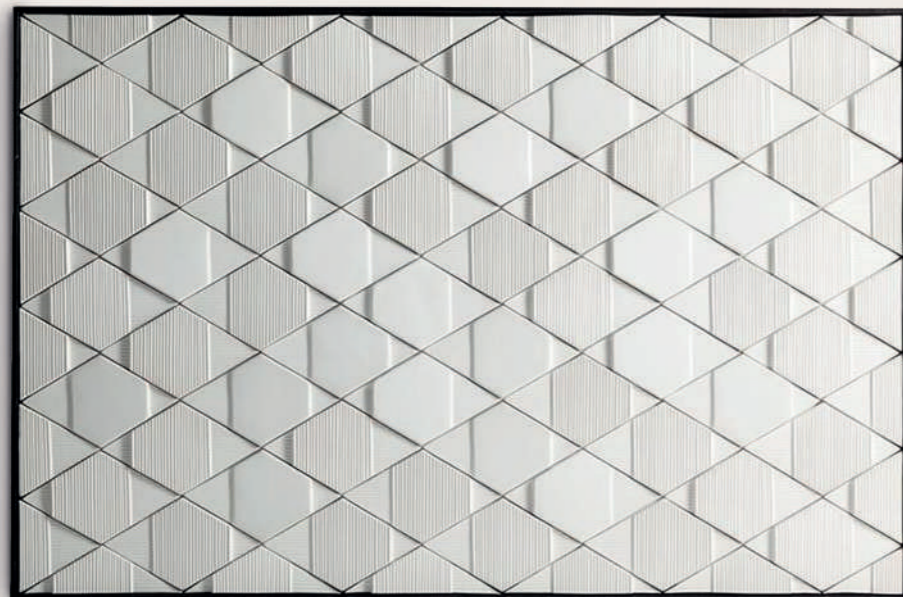




tile panels

tua

*Tua is a registered design



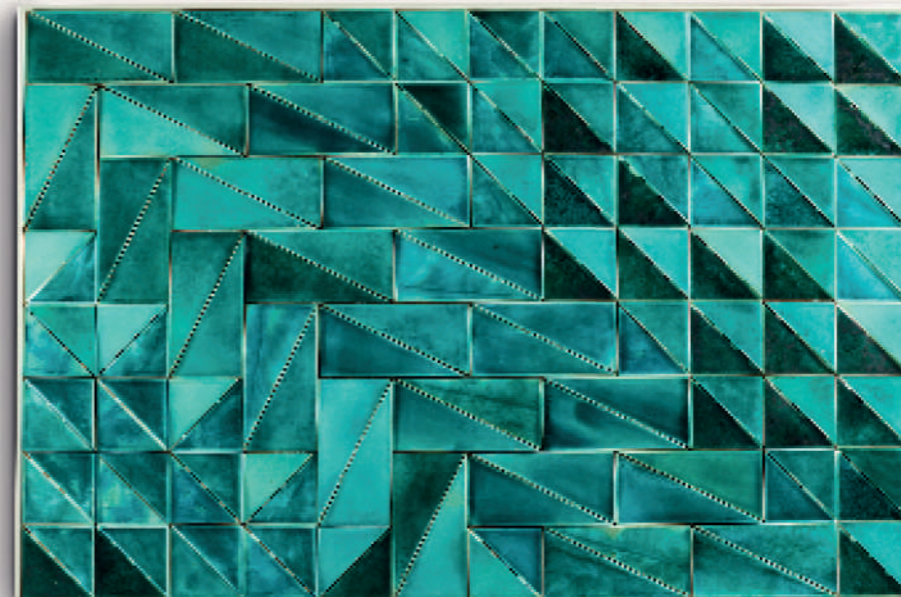
technical information

Handmade tiles in a lacquered wood frame
in ivory, bronze, gold or black
w 100 cm x h 150 cm x d 4 cm
w 39" x h 59" x d 1,5"
weight:
46 kg
100 lb

Tua tile panels are available in a range of different finishes.
See all color options at page 94.

tejo

*Tejo is a registered design



technical information

Handmade tiles in a lacquered wood frame
in ivory, bronze, gold or black
w 100 cm x h 150 cm x d 4 cm
w 39" x h 59" x d 1,5"
weight:
56 kg
124 lb

Tejo tile panels are available in a range of different finishes.
See all color options at page 94.

douro

*Douro is a registered design



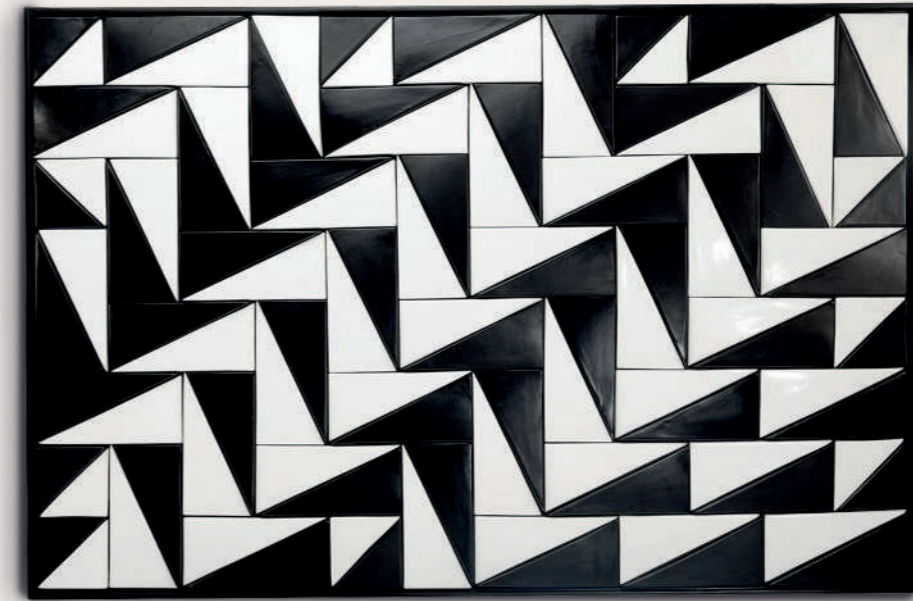
technical information

Handmade tiles in a lacquered wood frame
in ivory, bronze, gold or black
w 100 cm x h 150 cm x d 4 cm
w 39" x h 59" x d 1,5"
weight:
60 kg
133 lb

Douro tile panels are available in a range of different finishes.
See all color options at page 94.

tejo black & white I

*Tejo Black & White is a registered design



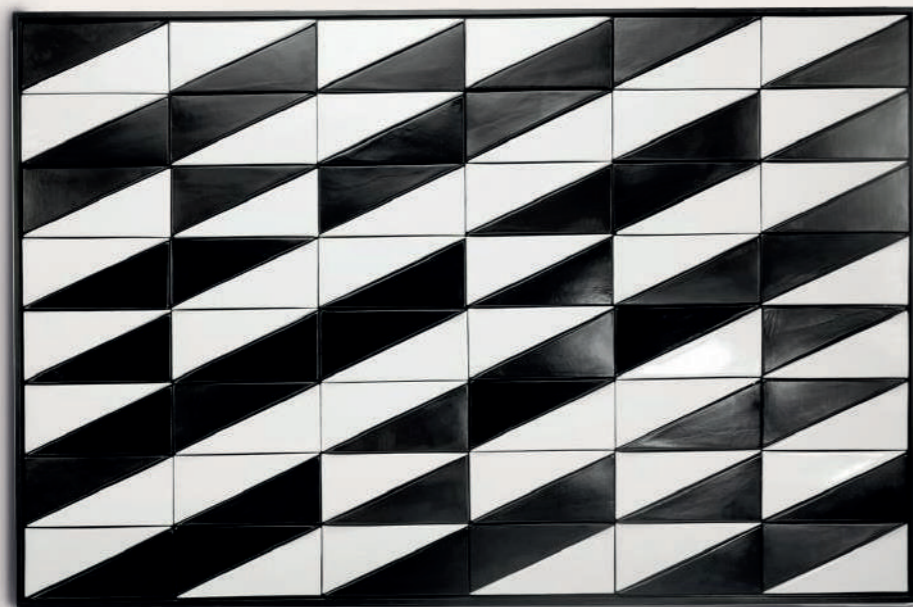
Tejo Black and White 1

technical information

Handmade tiles in a lacquered wood frame
in ivory, bronze, gold or black
w 100 cm x h 150 cm x d 4 cm
w 39" x h 59" x d 1,5"
weight:
58 kg
128 lb

tejo black & white 2

*Tejo Black & White is a registered design

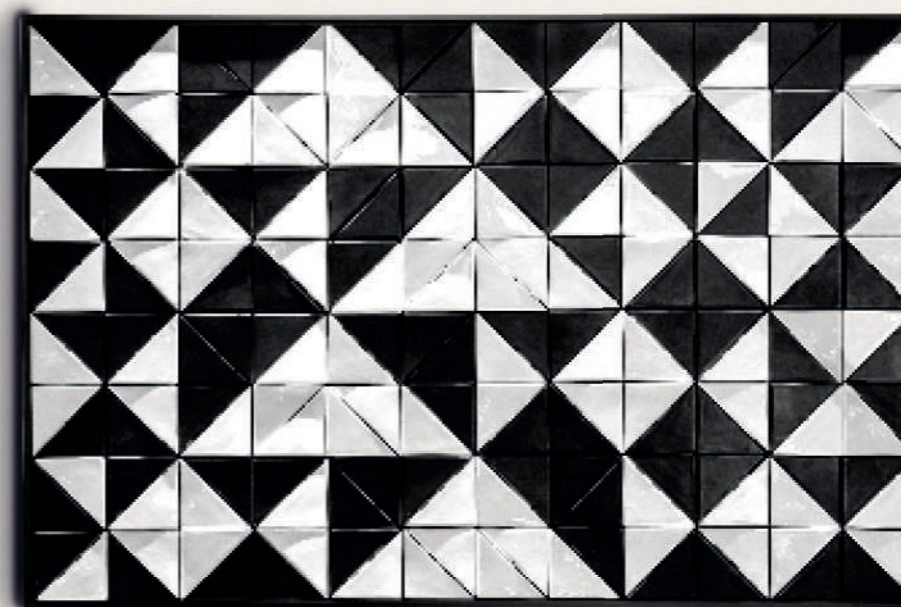


technical information

Handmade tiles in a lacquered wood frame
in ivory, bronze, gold or black
w 100 cm x h 150 cm x d 4 cm
w 39" x h 59" x d 1,5"
weight:
50 kg
110 lb

tejo black & white 3

*Tejo Black & White is a registered design



technical information

Handmade tiles in a lacquered wood frame
in ivory, bronze, gold or black
w 100 cm x h 150 cm x d 4 cm
w 39" x h 59" x d 1,5"
weight:
60 kg
132 lb



One & Only Hotel,
Maldivas

sample box



technical information

w 40 cm x h 40 cm x d 40 cm
 w 16" x h 15" x d 16"
 weight:
 20 kg
 44 lb

Contact your sales manager to get one.
[See all about it here ▶](#)

FINISHES

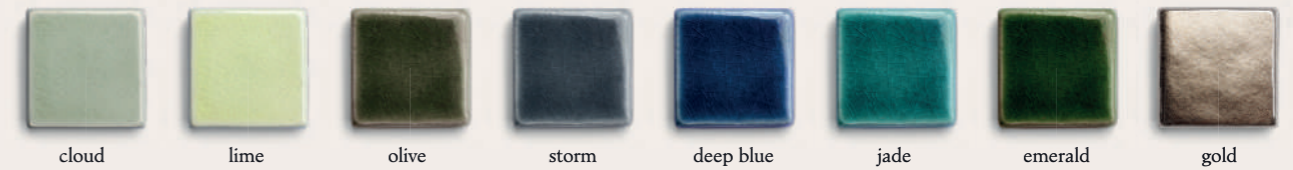
matte



glossy



craquelet



wood and metal

*For tile panels frames.



*Not all colors are suitable for high humidity areas. Ask your account manager for more information.

